



Product Reference Guide

Written by:
Stephen Emond

Produced By
Viatrexx



Rationale behind Viatrex remedies

Where did the word “Viatrex” come from?

Viatrex is derived from the concept that much which occurs in health has some connection to the body's matrix, hence **Via** to means “through” or “by” the **Matrix**, giving “Viatrix”. The next step was to consider Mother Nature so we put “**XX**” at the end for the female chromosome, and changed the final “i” for an “e”, giving us “**Viatrex**”.

Why the stylised & full spectrum “V”?

From very young the concept of how a prism diffracts white light into a myriad of colors, showing the hidden spectrum of frequencies through color has been an inspiration for further thinking and innovation. The color spectrum has been part of our name since we started in the early 1990's. The stylized “V” was designed during the mid 1990's and reflects a concept of how a wave can carry rich and complex information. This came from our work in analysing and recording the resonances of substances through advanced technologies we had created. The concept of working with these often invisible, yet integral aspects of everyday life, is central to what we do. It is similar to discovering and expanding on actives in a substance (Spagyric) and evolving a stronger signaling for messenger molecules, therefore potentially better reception by cells. Our works brings us into levels these various metabolic factors, actives and substances may oscillate in and the multiple levels in the human condition they may affect. Through this line of thinking and processing we strive to develop intuitive and living remedies which address physiological through more subtle aspects of human existence.

Viatrex formulas are based on 3 simple principles

- 1- **Drainage & Detox.** The system must be open, cleaned out and able to receive regenerative and supportive nutrients in order to breathe properly and regenerate. This aspect we call drainage and detox. Drainage is opening the valves to let the toxins flow out, while detox is more of a deeper cleaning process. It addresses both extra-cellular and intra-cellular aspects of the cell & tissue. This step is like cleaning the floor before waxing, don't want to wax in the garbage.



- 2- **Regeneration**. From our product's perspective, is providing all the components necessary for the cell and tissue to be properly nourished, supported and energized so it may heal, regenerate, grow, function and eventually perpetuate at optimum levels.
We achieve this by introducing system specific nutrients for both extra and intra cellular support, in exacting concentrations for the most effective impact.
- 3- **Oxygenation**. This category represents to us the functions of respiration, Krebs cycle activity, enzymes, catalyst and all aspects which help the system or cell to breathe, produce energy or instill life into the system. If oxygenation is going on, then so is life, flow and movement.

Type of ingredients used

A variety of ingredient types and dilutions/concentrations are used for specific reasons

Sarcodes are healthy body parts of organs, glands, tissues and fluids. The source is usually pig (suis) or calf from trusted bio dynamic sources. The rationale for using these tissues is when the tissue in question is challenged, providing healthy tissue will potentially nourish it, introduce regenerative properties, include the metabolic factors it usually produces and resonate healthy references for it to strive for.

Metabolic factors are the biochemical substances the body normally produces or requires to keep itself healthy. They include, but are not limited to; vitamins, minerals, trace elements, salts, hormones, neurotransmitters, growth factors, cytokines, enzymes, amino acids, peptides and other natural biological substances the body requires for homeostasis. It is through these molecules that inside communication is performed and that we are able to function and maintain health. When considering the pathway we wish a formula to address, both the sarcodes (organs/glands/tissues) and metabolic factors become evident and cross-supportive. The metabolic factors add a strong nutritional/biochemical support to the entire system's cascading matrix while the responsible organs, glands or other tissues regenerate and encourage the sarcodes(s) to become self-sufficient. The Viatrex formulas use metabolic factors at physiological concentration.

Detoxification & drainage ingredients are usually herbal, anti-oxidants, phenol, antigen (allergens) or other similar substances which encourage the body to expel and flush out latent waste material.



Certain metabolic factors and sarcodes are also involved in the drainage and detoxification process. It is common for some substances to perform multiple functions such as lymph node being both part of the regenerative process as well as detoxification and drainage. Systems can become sluggish for a variety of reasons, such as Lifestyle, diet, limited water intake, environmental influences, chemicals the body is not used to, and a host of other potential insults or reasons. When it does, or depending on the type of insult it receives, the drainage remedies will encourage the various emunctories/body systems to release what may be sitting in the systems. For detoxification to happen, first the removal of excess buildup through drainage, then a deeper tissue, cellular or intra-cellular cleansing or detoxification takes place. As the tissue or cell starts to free itself of this extra burden, it can now start to improve its performance and resonates at higher operational levels, which encourages more & deeper detoxification.

Nosodes are homeopathically prepared pathogens, which are similar to vaccines. They are suggested to help counter the negative effects of the actual pathogen. The internal body environment dictates to large extent what will growth within it. Proper nutrition and drainage can go a long way to change the environment and encourage pathological change, however via Biological medicine, nosodes have demonstrated themselves to be extremely useful in creating positive shifts in the internal environment and bringing about positive change.

Gemmotherapy is the use of plant embryonic materials, from buds and shoots before the chlorophyll comes in, to produce low dilution macerates. These remedies are of a high vitality and have a strong impact on key body systems. We refer to them as herbal fountain of youth elixirs. They are placed in strategic formulas where their value can be magnified.

Emotional issues are arguably the leading cause behind most health conditions. If we consider Chinese medicine, it states that every organ has a certain type of emotion attached to it, such as anger goes to the liver. If the person leaves the anger incident un-resolved then the emotion builds up in the liver and liver function starts to get compromised. It becomes sluggish, and slower. Over time it becomes less effective doing what it normal did with ease, hence toxic build up, then impregnation and disease. Homeopathic principle suggests that low dilutions of a substance have a stronger effect on the physical challenges and physiological function, while a higher dilution of the same product tends to influence emotional dispositions. Therefore a low dilution of a liver remedy



would encourage drainage, a slightly higher dilution detox and a higher one would encourage a emotional activation of underlining unresolved issues. Until the successful release of the emotional link, the condition often returns to some degree. We use multiple dilutions of the same substance to cover this full range and encourage as thorough a regenerative process as possible.

Concentrations & Dilutions

The concentration or dilution of a substance plays a vital role on how it influences the various functions of the systems, organs, or glands the formula is addressing.

Mother tinctures and more physical concentrations are used for nutritional items like vitamins, some minerals and specific herbal components for their important influence and support on body functions.

Physiological concentrations (blood concentration levels) are used for sarcodes, hormones, neurotransmitters, growth factors and cytokines. Some studies suggest this concentration level provides the most effective level for biochemical function and influence, with no reported side effects.

Korsakovian. Some studies suggest that certain concentrations of metabolic factor substances stimulate, others sedate, while yet other regulate. Research on Korsakovian dilutions (K) suggest they are natural occurring homaccords (multiple dilutions of the same substance in one bottle) and provide an adaptogenic quality where the system in question is regulated. It is for this reason we often combine a physiological concentration with a Korsakovian. When we stop at 30K we are focusing on regeneration, functionality & intra cellular, when we go to 200K, we encompass the 30K, plus are going after deeper innate cellular functionality & emotional release.

Proprietary manufacturing techniques, well beyond homaccord and traditional Korsakovian, are used to further advance the global aspect of a uniformed and flowing therapeutic range for each substance. In this way we are able to fully express each ingredients potential from physiological through emotional qualities. We have found that this new resonance expression for each ingredient introduces a living aspect to the remedies where the technique is applied. In other words, ingredient resonances for all dilutions are found in the remedy, hence the body will take the exact dilution it requires at that moment. If there has been a shift in the person from taking a dose, the



next time the remedy is used the body will intuitively be drawn to new dilutions. In such a way the remedy works in sync with the person's natural healing process to not only address physical toxicity but causal and emotional baggage.

Sourcing of materials is first and foremost organic, biodynamic and the highest vitality possible. **Structured water** is used for the highest polyvalence and ingredient resonance memory possible. Structuring the water is similar to defragging your hard drive, it reorganizes the content in a logical and more structured fashion for higher efficacy and better performance. With water the impact is multi-fold as it brings this aspect to body's own water store houses as well. In this way the remedy is as pure and strong as possible. All in all the products are crafted, manufactured and stored in ideal conditions. The end result is remedies which perform at the optimal levels nature intended them to.

Spray delivery system. We have opted to the spray delivery system over the traditional standard pipette or European cap dropper systems. Through the spray system we have calibrated sprays of 1 squirt = 5 drops. It is direct, clean and less issues with contamination. The spray system allows for easier oral, into water or other substance and topical applications. There is less chance of it spilling when being carried or in a purse. Overall we find this delivery method provides more advantages, ease of use and freedoms.

AcneXX[®]

Indications for Use:

- Supports healthy skin

Item# DS0006

Dietary Supplement

Formula

50 MI/1.7 oz bottle

20% Alcohol

Proprietary Micro Blend of the following essences:

Ascorbic Acid, Anemone Pulsatilla (Whole Plant), Echinacea (Whole Plant), Fumaric Acid, Gotu Kola (Whole Plant), Hydro quinine, Lymph Node (Sus Scrofa &/or Bovine), Aspartate (as potassium aspartate), Saw Palmetto (Whole Plant), Skin (Sus Scrofa &/or Bovine), Sodium (as Sodium pyruvate), Succinic Acid, Zinc Colloidal & Vitamin A.

Dosage:

1 - 5 spray(s), 1 - 3 time(s)/day

In crisis, 1 – 3 sprays every 15 minutes

May apply topically

Copyright Viatrex 2021



Metabolism

- Fumaric acid
- Sodium pyruvate
- Succinic acid
- Vitamin A
- Zinc



Regeneration

- Ascorbic Acid
- Cutis/Skin
- Fumaric acid
- Gotu Kola
- Hydro Quinine
- Lymph Node
- Saw palmetto
- Vitamin A
- Zinc



Drainage & Detox

- Echinacea
- Fumaric acid
- Gotu Kola
- Saw Palmetto

Combinations:

Additional drainage: Mesenchyme, DermeXX

Hormonal balance: Female +, Male +

Adipose[©]

Indications for Use:

- Organotherapy & homeopathic preparation
- Adipose tissue
- Improve & reset metabolism
- Metabolic syndrome / chronic fatigue / insulin resistance
- Weight loss

Item# VPC0008

NPN: 80061028

Formula

50 MI/1.7 oz bottle

20% Alcohol

Adrenalin	6X, 30K	Adrenal support
Artery	6X, 30K	Circulatory support
cAMP	30K	Intra-Cellular support
Centella asiatica	6X, 30K	Adaptogen
Citric Acid	30K	Cell respiration
Coenzyme A	6X, 30K	Cell respiration
Colchicum autumnale	6X, 200K	Drainage
Ferrum citricum	30K	Cell respiration
Fumaric acid	30K	Cell respiration
Insulin	12C, 200K	
Kalium aceticum	30K	Intra-Cell metabolism
DL-Lactic acid	30K	Cell respiration
Liver	6X, 30K	Liver support
Lymph node	8X, 200K	Immune support
Natrum oxalaceticum	30K	Cell respiration
Natrum Pyruvicum	30K	Cell respiration
Pituitary gland	6X, 200K	Regeneration
Quinine hydrochloride	30K	Energy support
Succinic acid	30K	Cell respiration
Thyroid gland	30K	Endocrine balancing
Vein	6X, 200K	Regeneration
Yohimbinum	30K	Endocrine balancing



Oxygenation

- Adrenalin
- cAMP
- Citric Acid
- CoEnzyme A
- Ferrum cit.
- Fumaric Ac
- Insulin
- Kalium ace.
- DL-Lactic Ac
- Nat Oxalac
- Nat Pyru
- Quinine hydro
- Succinic Ac



Regeneration

- Adrenalin
- Artery
- cAMP
- Centella Asia
- Citric Acid
- CoEnzyme A
- Ferrum cit.
- Fumaric Ac
- Insulin
- Kalium ace.
- DL-Lactic Ac
- Liver
- Lymph node
- Nat Oxalac
- Nat Pyruvic
- Pituitary gland
- Quinine hydro
- Succinic Ac
- Thyroid gland
- Vein
- Yohimbinum



Drainage & Detox

- Centilla Asia
- Colchicum
- Insulin
- Liver
- Lymph node
- Vein

Dosage:

1 - 5 spray(s), 1 - 3 time(s)/day

In crisis, 1 – 3 sprays every 15 minutes

May apply topically

Copyright Viatrex 2021

Combinations:

Cellulite: for complete aesthetic protocol.

Systemic Dx or Mesenchyme: for additional drainage, add if weight loss gets stalled or evidence of toxic fats.

Fem+ or Male+: for endocrine support.

Intra-Cell: for additional cellular metabolism & energy.

Aller Balance[®]

Indications for Use:

- Organotherapy & Homeopathic preparation
- Allergic-Sensitivity reactions
- Encourages a healthy terrain and rebalanced immune system
- Up regulates TH1 to balance with TH2
- Immune enhancement

Item# VPC0019

NPN: 80053287

Formula

50 MI/1.7 oz bottle

20% Alcohol

Adrenal gland	200K	Adrenal Support
Adrenaline	30K	Adrenal support
Allium Cepa	200K	Drainage
Ammonium carb	200K	Drainage
Apis	200K	Inflammation
Arsenic Album	200K	Constitution support
Choline chloride	12C, 200K	Regeneration
Histamine	12C, 200K	IG support
Luffa operculata	30K	Reactional support
Lungs	200K	Respiratory support
Manganese	4X	Oligo support
Mucosa nasal	200K	Respiratory support
Natrium Muraticum	200K	Constitutional
Peyer's Patches	30K	Immune support
Sabadila	200K	Symptom relief
Serotonin	12C, 200K	Neurological support
Thymus	200K	Immune support



Oxygenation

- Histamine
- Serotonin



Regeneration

- Adrenal
- Adrenaline
- Arsenic album
- Choline chloride
- Histamine
- Lungs
- Manganese
- Mucosa nasal
- Nat mur
- Peyer's patches
- Serotonin
- Thymus



Drainage & Detox

- Acetylcholine chloride
- Allium cepa
- Ammonium carb
- Apis
- Arsenic album
- Luffa op.
- Nat mur
- Sabadila

Dosage:

1 - 5 spray(s), 1 - 3 time(s)/day

In crisis, 1 – 3 sprays every 15 minutes

May apply topically

Combinations:

Systemic Dx to assist with stronger drainage

With any of the sensitivity formulas: F'ds for food sensitivities

P'ts for animal sensitivities; P'llen mixes; Environmental;

Amoebas

Indications for Use:

- Amoeba & fluke issues
- Irritable, nervous, twitchy
- Restless sleep
- Lack of energy

Item# VPC0020

Formula

NDC: 63776-030-15

50 MI/1.7 Oz bottle

20% Alcohol

Argentum	6X, 30K	Immune support
Baptisia	3X, 30K	Immune support
Belladonna	12X, 30K	Drainage
Cajuput	3X, 30K	Drainage
Capsicum	3X, 30K	Anti-inflammation
China	12X, 30K	Regeneration
Frasera carolinensis (Colombo)	3X, 200K	Drainage
Hamamelis Virginica	3X, 200K	Regeneration
Hydrastis	3X, 200K	Drainage
Ipecac	6X, 30K	Drainage
Iridium	30K	Drainage
Liver	6X, 200K	Liver support
Lycopodium	12X, 200K	Drainage
Nitricum Acidum	12X, 30K	Drainage
Nosode Ameoba	200K	Immune support
Nux Vomica	12X, 30K	Drainage
Pancreas	6X, 200K	Pancreas support
Quassia Amara	6X, 30K	Vermifuge
Selenium	12X, 30K	Anti-oxidant



Oxygenation

- Argentum
- Selenium



Regeneration

- Baptisia
- Capsicum
- China
- Hamamelis
- Liver
- Pancreas
- Spleen



Drainage & Detox

- Belladonna
- Cajuput
- Frasera
- Hydrastis
- Ipecac
- Iridium
- Lycopodium
- Nitricum Acidum
- Nosode Ameobas
- Nux Vomica
- Quassia Amara
- Senna

Dosage:

1 - 5 spray(s), 1 - 3 time(s)/day

Copyright Viatrex 2021

Combinations:

Parasites for parasitic and worm issues

Relief 3 & Relief + to assist with symptomatic support

Systemic Detox to reduce the toxic load & strains on body

Immunexx for immune support

ANS - CNS[®]

Indications for Use:

- Balancing of the **Central Nervous System & Autonomic Nervous System**
- Adrenal support
- Ig support
- Neurological support
- Mental clarity support

Item# VPC0025

Formula

Choline Chloride (CC)	6X & 200K	Mental clarity
Epinephrine / Adrenaline	6X & 200K	Adrenal support
GABA	6X & 200K	Mental clarity
Histamine	6X & 200K	Ig Support
Hydrastis	3X	Drainage
Norepinephrine	6X & 200K	Neuro support
Taraxacum	3X & 30K	Drainage
Tyramine	6X & 200K	Neuro support

NDC: 63776-039-15

50 MI/1.7 oz bottle

20% Alcohol



•Histamine

Oxygenation



•Choline chloride
•Adrenaline
•GABA
•Norepinephrine
•Tyramine

Regeneration



•Choline chloride
•Hydrastis
•Taraxacum

Drainage & Detox

Dosage:

1 - 5 spray(s), 1 - 3 time(s)/day

In crisis, 1 – 3 sprays every 15 minutes

Combinations:

Systemic Detox to assist with stronger drainage

Neuro or **Neuro 3** for added neurological support

Arthro[©]

Indications for Use:

- Organotherapy & homeopathic preparation
- Support for Joint issues from an Auto-immune perspective
- Painful joints

Item# VPC0030

NPN: 80060926

Formula

50 ml/1.7 oz bottle

20% Alcohol

Adrenal gland	8X, 200K	Adrenal Support
Alpha Ketoglutaric Acid	6X, 30K	Cell respiration
Alpha Lipoic Acid	6X, 30K	Anti-aging
Apomorphine	12C, 30K	Pain Relief
Articulation Capsule	8X, 200K	Regeneration
Ascorbic Acid	8X, 30K	Anti-oxidant
Coeliac plexus	8X, 200K	Neurological support
Colchicum Autumnale	6C, 200K	Drainage
Collagen	8X, 200K	Regeneration
Erythrocytes	8X, 200K	Immune support
Liver	6X, 200K	Drainage
Lymph Node	8X, 200K	Immune support
Conjunctive tissue	6X, 200K	Regeneration
Nadide	30K	Cell respiration
Parathyroid	6X, 200K	Regeneration
Placenta	6X, 200K	Regeneration
Quinhydrone	30K	Citric cycle support
Sulphur	30K	Drainage
Vein	6X, 30K	Regeneration



Oxygenation

- Alpha Keto
- Alpha Lipoic
- Ascorbic acid
- Erythrocytes
- Nadide
- Quinhydrone



Regeneration

- Apomorphine
- Articulation
- Ascorbic acid
- Coeliac plex
- Colchicum
- Collagen
- Erythrocytes
- Liver
- Lymph node
- Conjunctive tissue
- Parathyroid
- Vein



Drainage & Detox

- Ascorbic acid
- Colchicum
- Liver
- Lymph node
- Conjunctive tissue
- Nadide
- Quinhydrone
- Sulphur
- Vein

Dosage:

1 - 5 spray(s), 1 - 3 time(s)/day

Oral or topical

Copyright Viatrexx 2021

Combinations:

Ou-CH to assist with pain and inflammation

Systemic Dx for general drainage of system and to enhance healing

Other **Viatrexx Pain & Sports Medicine** products.

Articula[©]

Indications for Use:

- Organotherapy preparation
- Articulation /joint support & Regeneration
- Increase blood flow to connective tissues
- Stiff Joints
- Limited joint movement or motion

Item# VPC0031

NPN: 80057062

Formula

50 MI/1.7 Oz bottle

Ankle Articulation	6X, 200K	Regeneration
Achilles tendon	200K	Regeneration
Hip Articulation	6X, 200K	Regeneration
Knee Articulation	7X, 200K	Regeneration
Liver	6X, 200K	Drainage



Oxygenation



Regeneration

- Ankle Articulation
- Achilles tendon
- Hip Articulation
- Knee Articulation
- Liver



Drainage & Detox

- Liver

Dosage:

1 - 5 spray(s), 1 - 3 time(s)/day

Copyright Viatrexx 2021

Combinations:

Ou-CH to assist with pain and inflammation

Systemic Dx for general drainage of system and to enhance healing

Other Viatrexx Pain & Sports Medicine products.

BactereXX[©]

Indications for Use:

- Bacterial Contamination
- Chronic disposition to illness
- IBS
- Foggy brain

* Good late fall through spring during wet season

Item# DS0045

Formula

Dietary Supplement

50 ml/1.7 oz bottle

20% Alcohol

Proprietary Mico Blend of the following essences:

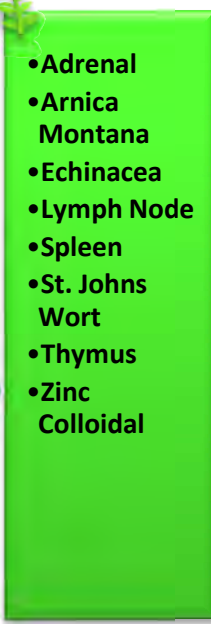
Adrenal(Sus Scrofa &/or Bovine), Arnica Montana(Whole Plant), Echinacea, Golden Seal(Whole Plant), Horse Radish(Root), Iridium Colloidal, Iron Colloidal, Lomatium Dissectum(Whole Plant), Lymph Node(Sus Scrofa &/or Bovine), Phosphorus Colloidal, Spleen(Su Scrofa &/or Bovine), St. Johns Wort(Whole Plant), Tecoma(whole Plant), Thymus(Sus Scrofa &/or Bovine), Zinc Colloidal.



Metabolism



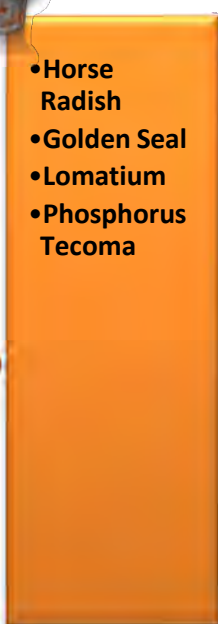
Regeneration



- Adrenal
- Arnica Montana
- Echinacea
- Lymph Node
- Spleen
- St. Johns Wort
- Thymus
- Zinc Colloidal



Drainage & Detox



- Horse Radish
- Golden Seal
- Lomatium
- Phosphorus Tecoma

Dosage:

1-3 spray(s), 1 - 3 time(s)/day

Combinations: extra drainage Systemic Detox or Mesenchyme Immunexx for extra anti-bacterial & anti-viral support

Candida+ for overgrowth, consider adding Parasites

*2-3 mths on, 1 mth off, then 2 mths on. Best with systemic dx

Copyright Viatrexx 2021

Cand'da +[©]

Indications for Use:

- Nosode and homeopathic preparation
- Candida overgrowth
- Addresses the environment which supports its growth & its by-products
- Dysbiosis
- Leaky gut

Item# VPC0070

NPN: 80057232

Formula

50 MI/1.7 oz bottle

20% Alcohol

Ammoniacum Gummi
Aspergillus Nigrum

6-20X, 200K Anti-age
12C, 200K Urogenital
drainage

Caffeinum

6X, 200K Urogenital
drainage

Candida Albicans
Candida Parapsilosis
Ipecacuanha
Lycopodium Clavatum
Penicillium

12-30X, 12-200K Dysbiosis
200K Dysbiosis
6X, 30-200K Drainage
60M, 12X, 73K Drainage
30X, 60M Gut flora
balance
12X, 200K Intestinal
balance

Vaccinium myrtillus



Oxygenation

•Ammoniacum
gummi



Regeneration

•Penicillium
•Vaccinium
myrtillus



Drainage & Detox

•Aspergillus
Nigra
•Caffeinum
•Candida
Albicans
•Candida
parapsilosis
•Ipecacuanha
•Lycopodium
clavatum

Dosage:

1-5 spray(s), 1 - 3 time(s)/day

Copyright Viatrexx 2021

Combinations:

Systemic Dx to assist with stronger drainage

P'sites for parasitic infestations

Sensitivity products for a gentler healing experience

F'ds for food sensitivities

Cand'da 1[©]

Indications for Use:

- Nosode & homeopathic preparation
- Initial drainer for strong Candida overgrowth
- Follow up with Candida +
- Addresses the environment which supports its growth & its by-products
- Dysbiosis
- Leaky gut

Item# VPC0071

NPN: 80057651

Formula

50 MI/1.7 oz bottle

20% Alcohol

Caffeinum	6X, 200K	Urogenital drainage
Candida Albicans	12X, 12K- 200K	Dysbiosis
Chrysanthemum parthenium	30X, 200K	Drainage
Hydrocotyle Asiatica	6X, 200K	Drainage
Penicillin	30X, 60M	Gut flora Balance
Vaccinium myrtillus	12X, 200K	Intestinal balance



Oxygenation

•Hydrocotyle Asiatica



Regeneration

•Penicillium
•Vaccinium myrtillus



Drainage & Detox

•Caffeinum
•Candida Albicans
•Chrysanthemum
•Hydrocotyle Asiatica

Dosage:

1-5 spray(s), 1 - 3 time(s)/day

Copyright Viatrexx 2021

Combinations:

Cand'da + for a deeper action (2 – 4 wks) after Candida 1 started
Systemic Dx to assist with stronger drainage

P'sites for parasitic infestations

Relief 3 for a gentler healing experience

Cellulite[®]

Indications for Use:

- Organotherapy & homeopathic preparation
- Cellulite drainage & tonification
- Metabolism & lipid balance
- Hormonal support
- Circulatory support and regeneration

Item# VPC0076

NPN: 80061061

Formula

50 MI/1.7 oz bottle

20% Alcohol

Artichoke	30K	Cholesterol balance
cAMP	30K	Intra-Cellular support
Centella asiatica	6X, 30K	Adaptogen
Citric Acid	30K	Cell respiration
Cobalt	30K	GI function
Ferrum citricum	30K	Cell respiration
Fumaric acid	30K	Cell respiration
Ginkgo biloba	30K	Circulation support
Hamamelis	30K	Venous support
Kalium aceticum	30K	Cell respiration
DL-Lactic acid	30K	Cell respiration
Lymph node	8X, 200K	Lymphatic support
Manganese	30K	Drainage
Melilotus officinalis	30K	Drainage
Natrum oxalaceticum	30K	Cell respiration
Natrum pyruvicum	30K	Cell respiration
Quinine hydrochloride	30K	Krebs cycle support
Succinic acid	30K	Cell respiration
Vein	6X, 200K	Regeneration
Zinc	30K	Metabolism



Oxygenation

- cAMP
- Carnatine
- Citric Acid
- Ferrum cit.
- Fumaric Ac
- Ginkgo biloba
- Kalium ace.
- Lactic Acid
- Nat Oxa
- Nat Pyru
- Quinine hydro
- Succinic Ac
- Zinc



Regeneration

- bFGF
- cAMP
- Centella
- Cobalt
- Ferrum cit.
- Fumaric Ac
- Ginkgo biloba
- Hamamelis
- Kali um ace.
- Lymph node
- Vein
- Zinc



Drainage & Detox

- Artichoke
- Centella
- Cobalt
- Ginkgo biloba
- Hamamelis
- DL-Lactic Ac
- Lymph node
- Melilotus
- Manganese
- Vein

Combinations:

If there is cellulite need to use with Adipose.

Systemic or Mesenchyme+ GI + Lymph: for extra drainage

Consider Female+ or Male+ if endocrine is off

Connectissue: to help firm skin and scaffolding*

Dosage:

1 - 5 spray(s), 1 - 3 time(s)/day

May apply topically

Copyright Viatrexx 2021

Connectissue[©]

Indications for Use:

- Organotherapy preparation
- Connective tissue & cartilage Repair & Regeneration
- Increase blood flow to connective tissues including cartilage
- Strengthen cartilage, muscles & tendons

Item# VPC0090

NPN: 80057066

Formula

Cartilage
Collagen
Erythrocytes
Liver
Muscle
Tendon

50 MI/1.7 Oz bottle

20% Alcohol

6X, 200K Regeneration
8X, 200K Regeneration
8X, 200K Regeneration
6X, 200K Drainage
6X, 200K Regeneration
8X, 200K Regeneration



Oxygenation



Regeneration

•Cartilage
•Collagen
•Erythrocytes
•Liver
•Muscle
•Tendon



Drainage & Detox

•Liver

Dosage:

1 - 5 spray(s), 1 - 3 time(s)/day

Copyright Viatrex 2021

Combinations:

Ou-CH to assist with pain and inflammation

Systemic Dx for general drainage of system and to enhance healing

Other Viatrex Pain & Sports Medicine products.

Dairy[©]

Indications for Use:

- Sensitivity to dairy products & by-products
- Congestion
- Respiratory challenges
- Hormonal imbalances
- Weight management

Item# VPC0101

NDC: 63776-107-15

Formula

50 MI/1.7 oz bottle

20% Alcohol

Dairy Allersode 12X, 33- 203K Relief of dairy sensitivities.

In 12X, 18X, 36X & 15K, 33K:

Apiol	Endocrine support
Asparagine	Amino acid support
Benzoic Acid	GI support
Choline	Drainage
Cinnamic Acid	Drainage
Coumarin	Drainage
Eugenol	Drainage
Estrogenic compounds	Endocrine support
Folic Acid	Anti-aging
Formaldehyde	Drainage
GABA	Neurological support
Histamine	IG support
Lactose	Sensitivity relief
Menadione	Drainage
Octopamine	Drainage
Phenyl Isothiocyanate	Drainage
Piperine	Drainage
Progesterone	Endocrine support
Rutin	Drainage
Vannylamine	Nutritional support
Xanthenes	Immune support
IL-12	10X, 200K Immune support
Interferon Gamma	9X, 200K Immune support
Taraxacum	3X Drainage



Oxygenation

- Benzoic Acid
- Folic Acid



Regeneration

- Apiol
- Asparagine
- Benzoic Acid
- Estrogenic compounds
- GABA
- Histamine
- IL-12
- INF-y
- Progesterone
- Vannylamine
- Xanthenes



Drainage & Detox

- Choline
- Cinnamic Acid
- Coumarin
- Dairy Allersode
- Eugenol
- Folic Acid
- Formaldehyde
- Hydrastis
- Lactose
- Menadione
- Octopamine
- Phenyl Isothiocyanate
- Piperine
- Rutin
- Taraxacum

Combinations:

Systemic Detox for general drainage of system

Neuro for neurological support

Relief 3 or **Relief +** for reactional support and relief

Dosage:

1 - 5 spray(s), 1 - 3 time(s)/day

Copyright Viatrex 2021

DermeXX[®]

Indications for Use:

- For the temporary relief of symptoms associated to skin challenges.

Item# DS0105

Dietary Supplement

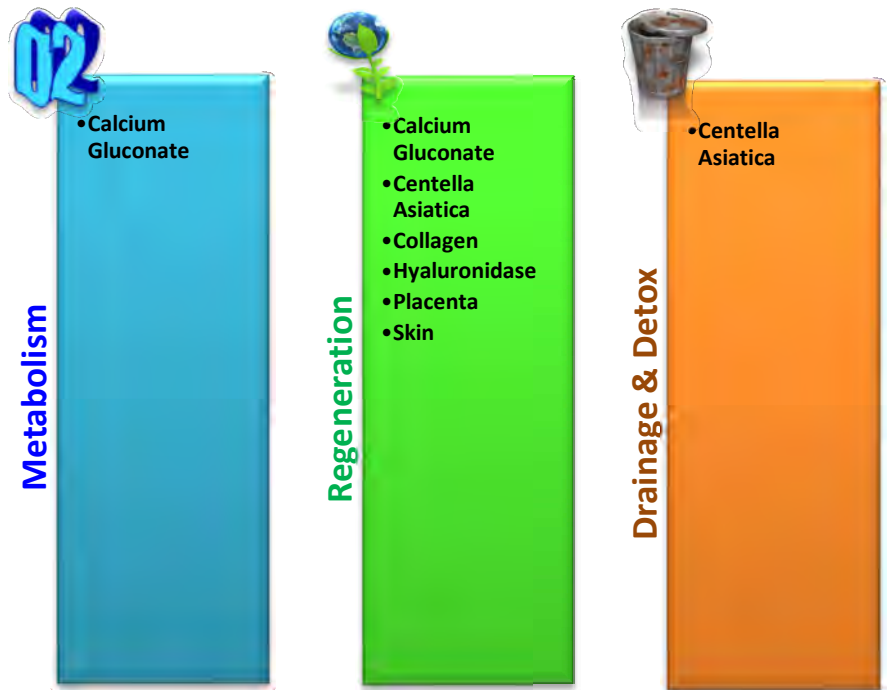
Formula

50 MI/1.7 oz bottle

20% Alcohol

Dietary Proprietary Micro Blend of trace and essence of:

Calcium (Calcium Gluconate), Centella Asiatica (Whole plant), Collagen (Sus scrofa), Skin (Sus scrofa &/or Bovine), Placenta (Sus scrofa &/or bovine), Hyaluronidase.



Dosage:

1 - 5 spray(s), 1 - 3 time(s)/day

May apply topically

Copyright Viatrex 2021

Combinations:

Mesenchyme for extra skin cleansing

Connectissue for skin healing, anti-age & regeneration

Systemic Detox, Immunexx or Parasites if indicated

Dnt'I[©]

Indications for Use:

- Dental products toxicity
- Heavy metal drainage
- Lymph drainage

Item# VPC0107

Formula

Ethylicum	30K	Drainage
Fumaria Officinalis	30K	Drainage
Hepar Sulphuris calcareum	30K	Drainage
Inositol Phosphate	6X, 30-200K	
Kali Carbonicum	30K	Drainage
Lymph	6X, 30-200K	immune support
Merc Vivus	6X, 30-200K	
Nat Fluor	6X, 30-200K	
Pinus Sylvestris	30K	Regeneration
Piper Nigrum	30K	Drainage
Prunus Spinosa	30K	Drainage
Silicia	6X, 30-200K	Drainage
Spleen	6X, 30-200K	Regeneration
Sulphuricum Acidum	30K	Drainage
Tilia Tomentosa (Europaea)	30K	Neurological support
Uranium Nitricum	6X, 30-200K	Drainage

NDC:63776-114-15

50 MI/1.7 oz bottle

20% Alcohol



Oxygenation



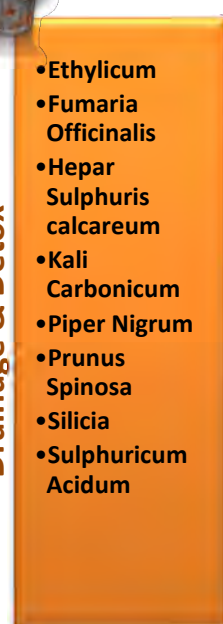
Regeneration

- Pinus Sylvestris
- Spleen
- Tilia Tomentosa



Drainage & Detox

- Ethylicum
- Fumaria Officinalis
- Hepar Sulphuris calcareum
- Kali Carbonicum
- Piper Nigrum
- Prunus Spinosa
- Silicia
- Sulphuricum Acidum



Dosage:

1 - 5 spray(s), 1 - 3 time(s)/day

Copyright Viatrexx 2021

Combinations:

Mesenchyme or Systemic Dx drainage support

Aller-Balance sinus, mucosa, respiratory drainage

Neuro 3 & MuSkel neurological support

Environmentals

Indications for Use:

- Sensitivity to benzenes, deodorants, food additives, hair sprays, Isopropyl, paraffin, petro chemicals, polyesters, tetra-chlorides.
- Hormonal imbalances
- Mental function & clarity
- Weight management
- Non specific health challenges

Item# VPC0150

NDC: 63776-140-15

Formula

50 MI/1.7 Oz bottle

Environmental Allersode: 12X, 33-203K, 51M

Benzene Products
Deodorants
Food Colorants and dyes
Hair Spray
Isopropyl Alcohols
Paraffin
Petro chemical products
Polyester
Tetrachloride Environmental Products

Juniper Virginiana	3X (Gemmotherapy)
Piscidia Erythrina	6X, 30-200K, 50M
Pyrrole	6X, 30-200K, 50M
Sumac	6X, 30-200K, 50M



Oxygenation



Regeneration

•Piscidia
Erythrina



Drainage & Detox

•Enviromental
Allersode
•Juniper
Virginiana
•Pyrrole
•Rhus
Aromatica

Dosage:

1 - 5 spray(s), 1 - 3 time(s)/day

Combinations:

Systemic Detox for general drainage of system

Neuro 3 for neurological support

Female + or Male + for hormonal support

Enzyme +[©]

Indications for Use:

- Bloating
- Constipation
- Digestive problems
- Enzyme deficiency
- Immune system
- Pancreas support

Item# VPC0045

Formula

NDC: 63776-142-15

50 MI/1.7 oz bottle

20% Alcohol

Amylase	6X, 30-200K	Metabolism, regeneration
Cellulase	6X, 30-200K	Metabolism, regeneration
Lactase	6X, 30-200K	Metabolism, regeneration
Lipase	6X, 30-200K	Metabolism, regeneration
Maltase	6X, 30-200K	Metabolism, regeneration
Protease	6X, 30-200K	Metabolism, regeneration
Sucrase	6X, 30-200K	Metabolism, regeneration



Oxygenation

- Amylase
- Cellulase
- Lactase
- Lipase
- Maltase
- Protease
- Sucrase



Regeneration

- Amylase
- Cellulase
- Lactase
- Lipase
- Maltase
- Protease
- Sucrase



Drainage & Detox

- Amylase
- Cellulase
- Lactase
- Lipase
- Maltase
- Protease
- Sucrase

Dosage:

1 - 5 spray(s), 1 - 3 time(s)/day

Combinations:

GI: improve GI environment and process

Systemic Detox: general drainage

FaceXX[©]

Indications for Use:

- Facial skin drainage & regeneration
- Improved circulation, cellular & pore respiration
- Facial skin toning
- Improved complexion and skin health

Item# DS0184

Dietary Supplement

Formula

50 MI/1.7 oz bottle

20% Alcohol

Proprietary Mico Blend of the following essences:

Adrenal(Sus Scrofa &/or Bovine), Collagen(Sus Scrofa &/or Bovine),Fumaric Acid, Vitamin B1, Vitamin B12, Vitamin B2, Vitamin B3, Vitamin B5, Vitamin B6, Vitamin B9, Silicea, Follicle(Sus Scrofa &/or Bovine), Ginkgo(Whole Plant), Muscle(Sus Scrofa &/or Bovine), Placenta(Sus Scrofa &/or Bovine), Potassium Aspartate, Red Clover(Flower Heads), Silica, Skin(Sus Scrofa &/or Bovine),Wild Yam(Root & Rhizome).



Metabolism

- Krebs
- Multi-B Vitamins



Regeneration

- Adrenal
- Collagen
- Follicle
- Ginkgo
- Krebs Intermediates
- Muscle
- Multi B Vitamins
- Placenta
- Skin
- Trifolium
- Wild Yam



Drainage & Detox

- Ginkgo
- Krebs
- Multi-B Vitamins
- Silica
- Wild Yam

Combinations:

Drainage & glow: Mesenchyme, Prolo, DermeXX

Toning: Connectissue, Prolo, Tone

Dosage:

1 - 5 spray(s), 1 - 3 time(s)/day

In crisis, 1 – 3 sprays every 15 minutes

May apply topically

Copyright Viatrexx 2021

Fem +[©]

Indications for Use:

- Organotherapy and homeopathic preparation
- Balancing & support of the female hormonal system

Item# VPC0187

NPN: 80057624

Formula

50 MI/1.7 Oz bottle

20% Alcohol

Adrenal Gland	6X, 200K	Adrenal support
Cholesterinum	6X, 200K	Drainage
Corpus Luteum	6X, 200K	Hormonal support
Folliculinum	6X, 200K	Hormonal support
Hypothalamus	6X, 200K	Regeneration
Ovary	6X, 200K	Regeneration
Pancreas	6X, 200K	Regeneration
Pineal gland	6X, 200K	Regeneration
Pituitary gland	6X, 200K	Regeneration
Thalamus	6X, 200K	Regeneration
Thymus	6X, 200K	Regeneration
Thyroid Gland	6X, 200K	Regeneration



Oxygenation

- Pituitary gland
- Thymus



Regeneration

- Adrenal Gland
- Cholesterinum
- Corpus Luteum
- Folliculinum
- Hypothalamus
- Ovary
- Pineal gland
- Pituitary gland
- Thalamus
- Thymus
- Thyroid Gland



Drainage & Detox

- Cholesterinum
- Pancreas
- Thyroid Gland

Dosage:

1 - 5 spray(s), 1 - 3 time(s)/day

In crisis, 1 – 3 sprays every 15 minutes

Combinations:

Systemic Dx to assist with stronger drainage

One or a combination of the **Viatrex Sensitivity &/or System Drainage** products for targeted **Drainage & Detox**.

Foods[©]

Indications for Use:

- Food Sensitivity
- Th1 – Th2 balance
- Hormonal imbalances
- Mental function & clarity
- Weight management
- Non specific health challenges

Item# VPC0185

Formula

NDC: 63776-166-15

50 MI 1.7oz bottle

20% Alcohol

Carbo Vegetabilis	30K	Drainage
Eupatorium Aromaticum	30K	Neuro support
Ferrum Iodatum	30K	Endocrine support
Food Allersode*	200K	Immune support
Gelsemium	30K	Neuro support
Hepar Sulph Calc	30K	Drainage
Histamine	30K	Ig support
IL-12	10X, 200K	Immune support
Interferon Gamma	9X, 200K	Immune support
Iodum	30K	Thyroid support
Kali Gluconate	30K	Adrenal support
Lycopodium	30K	Drainage
Oleum Cajaputi	30K	Serotonin support
Ribes Nigrum (Gemmo)	6X	Adrenal support
Rosa Canina (Gemmo)	6X	Drainage
Serotonin	30K	Neuro support
Xanthine	30K	Immune support

Food Allersode* mix: Almond, Apple, Banana, Barley, Beans, Beef, Cashew, Cheese, Chicken, Chocolate, Coconut, Cod, Coffee, Cotton, Seed, Crab, Egg, Eggplant, Flax Seed, Gluten, Green Pepper, Hazelnut, Lamb, Milk, Onions, Orange, Oyster, Peanut, Pecan, Pork, Potato, Rice, Salmon, Shrimp, Strawberry, Soybean, Tea, Tomato, Tuna, Walnut, Wheat.

Dosage:

1 - 5 spray(s), 1 - 3 time(s)/day

Copyright Viatrex 2021



Oxygenation

- Histamine
- IL-12
- Interferon Gamma
- Kali Gluconate
- Oleum Cajaputi



Regeneration

- Eupatorium Aromaticum
- Ferrum Iodatum
- Gelsemium
- Histamine
- IL-12
- Interferon Gamma
- Iodum
- Kali Gluconate
- Ribes nigrum
- Serotonin



Drainage & Detox

- Carbo Vegetabilis
- Hepar Sulph Calc
- Lycopodium
- Oleum Cajaputi
- Rosa Canina
- Xanthine

Combinations:

Systemic Detox for general drainage of system

Relief 3 or + for reactional support

One or a combination of the **Viatrex Sensitivity &/or System Drainage** products for targeted **Drainage & Detox**.

FungeXX[®]

Indications for Use:

- Fungal-yeast contamination
 - Mold contamination
- *Good in spring**

Item# DS0195

Formula

Dietary Supplement

50 ML/1.7 oz bottle

20% Alcohol

Proprietary Mico Blend of trace and essences of:

Anemone Pulsatilla (Whole Plant), Barberry (Whole Plant), Club Moss (Whole Plant), Desert Parsley (Whole Plant), Echinacea (Whole plant), Iridium (Colloidal), Iron (Colloidal), Goldenseal (Whole Plant), Horseradish (Root), Myrrh (Stem Resin), Pau D'arco (Whole Plant), Propolis, Selenium, Thymus (Sus scrofa &/or Bovine), Zinc (Colloidal).



Metabolism



Regeneration

- Echinacea
- Iron Colloidal
- Pau D'arco
- Propolis
- Selenium
- Thymus
- Zinc Colloidal



Drainage & Detox

- Anemone Pulsatilla
- Barberry
- Club Moss
- Desert Parsley
- Goldenseal
- Horseradish
- Iridium Colloidal
- Myrrh
- Phosphoric acid

Dosage:

1-5 spray(s), 1 - 3 time(s)/day

Combinations:

Candida+ + Parasites

Immunexx: for extra immune support

Systemic Detox: for anti fungal qualities (2-3 mths)

Mesenchyme: for matrix drainage

G-12

Indications for Use:

- Up regulates TH-1
- GI tract regeneration
- Asthmatic issues
- Allergies

Item# VP0084

Formula

Interferon gamma
Interleukin 12

NDC: 63776-698-15

50 MI/1.7 oz bottle

20% Alcohol

9X, 200K Immune support
10X, 200K Immune support



Oxygenation



Regeneration

- Interferon gamma
- IL-12



Drainage & Detox

Dosage:

1 - 5 spray(s), 1 - 3 time(s)/day

Copyright Viatrex 2021

Combinations:

Relief & Neuro products to assist with neurological functions

Allergy products for specific allergen

Systemic Detox for general drainage of system and to enhance healing

G'path[©]

Indications for Use:

- Geopathic stress support
- (geopathic stress from global grid or lay lines, under ground water, caves or underground hallow areas, mineral /oil deposits, or other global fields)
- EMF and other frequency based challenges

Item# VPC0210

Formula

NDC: 63776-188-15

50 MI/1 oz bottle

20% Alcohol

Alfalfa	3X	Regeneration
Agate	12X	Drainage
Calcareo Carbonica	7X	Drainage
Cuprum	30X	anti-spasmodic
Ferrum Met	12X	regeneration
Fucus Vesi	3X	Drainage
Iodium	12X	Thyroid support
Magnesium	12X	Pain relief
Manganese	12X	Regeneration
Magnetic Polus Arcticus 200K		polarity support
Magnetic Polus Aust	200K	polarity support
Phosphorus	30X	drainage
Quartz	12X	support
Silicea	30K	Drainage
Symph Off	3X	drainage
Tarentula	15X	drainage
X-Ray	30X	drainage

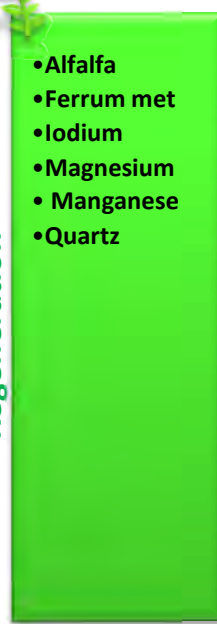


Oxygenation



Regeneration

- Alfalfa
- Ferrum met
- Iodium
- Magnesium
- Manganese
- Quartz



Drainage & Detox

- Agate
- Calcareo Carbonica
- Cuprum
- Fucus
- Magnesium
- Mag Artic
- Mag Aust
- Phos
- Silicea
- Symph off
- Tarentula
- X-ray



Dosage:

1 - 5 spray(s), 1 - 3 time(s)/day

Copyright Viatrexx 2021

Combinations:

Systemic Detox or Mesenchyme to eliminate extra burden
Thyro with Female + or Male + for endocrine support (glands are often the most affected by geopathic challenges)
Intra-Cell for Krebs and cyclic cycle support

GI[©]

Indications for Use:

- Bowel drainage
- Constipation
- Irritable Bowel Syndrome
- Leaky gut
- Chron's
- Hemorrhoids
- Sensitivities due to GI Issues

Item# VPC0211

NDC: 63776-189-15

Formula

50 MI/1.7 Oz bottle

20% Alcohol

Aloe	5X, 30K	Bowel function support
Alumina	200K	Constipation issues
Bryonia	30K	Diarrhoea
Carduus Marianus	3X, 30K	Constipation
Chelidonium Majus	3X, 30K	Liver biliary drainage
Collinsonia Canadensis	3X, 30K	Hemorrhoids, constipation
Colon	30K	Bowel function
Frangula	3X, 30K	Laxative
IL 12	10X, 30K	GI lining repair
Inf-y	9X, 30K	GI lining repair
Kalium Carbonicum	30K	Hemorrhoids, intestinal catarrh
Natrium Carbonicum	30K	Diarrhoea
Niacin	3X, 30K	Lipid conversion, gut support
Nux vomica	30K	GI track balance, laxative
Pantothenic Acid	3X, 30K	Metabolism
Peyer's Patches	30K	Immune support, Gut health
Rectum	30K	Hemorrhoids, peristaltic
Rheum	3X, 30K	Diarrhea, anal complaints
Scatolum	30K	Leaky gut
Serotonin	30K	Peristaltic movement
Taraxacum	6X, 30K	GI Drainage
Vitamin B1	4X, 30K	GI health
Vitamin B13	30K	GI health
Vitamin D	3X, 30K	GI Health



Oxygenation

- IL 12
- Inf-y
- Panthothenic Acid
- Seerotonin



Regeneration

- Aloe
- Alumina
- Colon
- IL 12
- Inf-y
- Kali Carb
- Nat Carb
- Niacin
- Pathothenic
- Peyer's
- Rectum
- Rheum
- Serotonin
- Vit B 1
- Vit B 13
- Vit D



Drainage & Detox

- Alumina
- Carduus Mar
- Chelidonium
- Collinsonia Can
- Colon
- Frangula
- Nux Vomica
- Rectum
- Scatolum
- Serotonin
- Taraxacum

Combinations:

Extra drainage: Systemic detox, Mesenchyme (for lighter)

GI health: Candida+, P'sites, G-12

Extra reaction support: any Relief product

Lung – Large intestine balance: Aller Balance

Dosage:

1 - 5 spray(s), 1 - 3 time(s)/day

May apply topically

Copyright Viatrex 2021

H-Metals[©]

Indications for Use:

- Chemical poisoning
- Dental
- **Heavy Metal toxicity** (symptoms related to)
- Smoke
- Smoked foods
- Strong lymph drainer as part of the formula
- Compare with Dnt'l for similar or complementary action

Item# VPC0045

Formula

Allum Sat	3X	Drainage
Arsenicum Alb.	12X	Drainage
Ascorbic Acid	3X	Anti-oxidant
Berberis	3X	Urogenital drainage
Colloidal Iridium	6X	Drainage
Colloidal Sele	6X	Metabolism
Cysteineum	6X	Drainage, metabolism
Formaldehyde	12X	Drainage
Lappa M	3X	Immune support
Lycopodium	12X	Drainage
Methionine	3X	Drainage
Natum Mur	12X	Metabolism
Nux Vomica	12X	Drainage
Phenol	12X	Drainage
Phytolacca	3X	Drainage
Stillinga	3X	Regeneration, drainage
Trifolium	3X	Drainage, regeneration

NDC: 63776-205-15

50 MI/1.7 oz bottle

20% Alcohol



Oxygenation

- Ascorbic Acid
- Colloidal Selenium
- Cysteineum
- Nat Mur



Regeneration

- Lappa M
- Stillinga
- Trifolium



Drainage & Detox

- Allum Sat
- Berberis
- Cysteineum
- Formaldehyde
- Lycopodium
- Methionine
- Nux Vomica
- Phenol
- Phytolacca
- Stillinga
- Trifolium

Dosage:

1-5 Spray(s), 1 - 3 time(s)/day

Copyright Viatrex 2021

Combinations:

Systemic Detox or Mesenchyme for additional drainage

Thyro with Female + or Male + for endocrine support

Neuro 3 & MuSkel or Prolo-Neuro for neurological support

Hair[©]

Indications for Use:

- Hair health
- Hair regeneration
- Endocrine balancing & support

Item# VPC0251

NDC: 63776-206-15

Formula

50 MI/1.7 Oz bottle

20% Alcohol

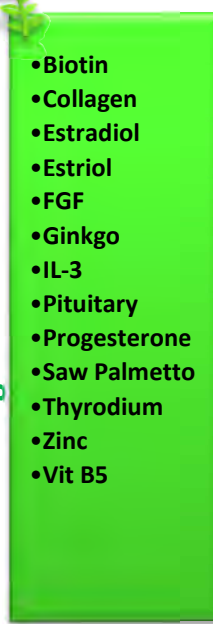
B5 / Pantothenic acid	30K	Nutritional support
Biotin	30K	Regeneration
Collagen	8X, 200K	Regeneration
Estradiol	200K	Hormonal support
Estriol	200K	Hormonal support
FGF	6X, 200K	Regeneration
Ginkgo	30K	Circulation support
IL-3	8X, 200K	Immune support
Pituitary	6X, 200K	Regeneration
Progesterone	200K	Hormonal support
Saw Palmetto	30K	Hormonal support
Silicea	200K	Drainage
Thyroidium	30K	Regeneration
Zinc	30K	Nutritional support



Oxygenation



Regeneration



- Biotin
- Collagen
- Estradiol
- Estriol
- FGF
- Ginkgo
- IL-3
- Pituitary
- Progesterone
- Saw Palmetto
- Thyroidium
- Zinc
- Vit B5



Drainage & Detox



- Silicea

Dosage:

1 - 5 spray(s), 1 - 3 time(s)/day

May apply topically

Copyright Viatrex 2021

Combinations:

Female + or Male+ for extra endocrine support

Intra-Cell for improved energy and metabolism

Immunexx[®]

Indications for Use:

- Organotherapy preparation
- Immune support
- Cold, flu suggestion
- Potential regeneration of immune system core (Bone marrow, Thymus and Lymph nodes)
- Adrenal support

Item# VPC0270

NPN: 80057618

Formula

50 MI/1.7 Oz bottle

20% Alcohol

Adrenal gland	6X, 200K	Adrenal support
Bone Marrow	8X, 30K	Immune support
Red blood cells/ Erythrocytes	8X, 200K	Regeneration
Lymph gland	8X, 200K	Immune support
Peyer's Patches	8X, 200K	Immune support
Spleen	8X, 200K	Immune support
Thymus gland	6C, 200K	Regeneration



Oxygenation

•Erythrocytes



Regeneration

•Adrenal
•Bone Marrow
•Erythrocytes
•Lymph gland
•Peyer's Patches
•Spleen
•Thymus gland



Drainage & Detox

•Lymph Node
•Peyer's Patches

Dosage:

1 - 5 spray(s), 1 - 3 time(s)/day

1 spray every 15 minutes during crisis

Combinations:

Systemic Dx for general drainage of system and to enhance healing

Immunexx-w[©]

Indications for Use:

- Immune support
- Cold, flu
- Repopulate immune system molecules
- TH1 – TH2 balancing
- Regeneration of immune system core (Bone Marrow, Thymus and Lymph nodes)
- Adrenal support

New Alcohol Free
Same formula
Good for:
Nebulizing, children
& people with
challenges with
alcohol

Item# VPC0270

Formula

NDC: 63776-244-15

50 MI/1.7 oz bottle

100% water

Adrenal gland
Ascorbic Acid
Bone Marrow
Erythrocytes
GCSF
IL-2
Interferon-γ
Lymph Node
Peyer's Patches
Spleen
Thymus

6X, 200K Adrenal support
8X, 30K Anti-oxidant
8X, 30K Immune support
8X, 200K Regeneration
12X, 200K Immune support
12X, 200K Immune support
7C, 200K Immune support
8X, 200K Immune support
8X, 200K Immune support
6X, 200K Regeneration
6C, 200K Regeneration



Oxygenation

- Ascorbic Acid
- Erythrocytes



Regeneration

- Adrenal
- Bone Marrow
- Erythrocytes
- GCSF
- IL-2
- Interferon-γ
- Lymph Node
- Peyer's Patches
- Spleen
- Thymus



Drainage & Detox

- Ascorbic Acid
- Lymph Node
- Peyer's Patches

Dosage:

1 - 5 spray(s), 1 - 3 time(s)/day

1 spray every 15 minutes during crisis

Combinations:

Systemic Detox for general drainage of system and to enhance healing

Infla[©]

Indications for Use:

- Homeopathic & Organotherapy medicine for symptoms of inflammation
- May help encourage a reduction of Inflammation
- Potential calming effect
- May reduce healing crisis
- Consider for supportive pain relief

Item# VPC0279

NPN: 80053446

Formula

50 MI/1.7 Oz bottle

20% Alcohol

Aconite	200K	Cell respiration
Adrenal gland	8X, 200K	Adrenal Support
Apis	200K	Inflammation
Belladonna	200K	Drainage
Bryonia	200K	Drainage
Citric Acid	30K	Cell respiration
Solar Plexus	8X, 200K	Neurological support
Conjunctive tissue	6X, 200K	Regeneration
Natrium Pyruvicum	30K	Cell respiration
Pineal	30K	Regeneration
Pituitary	6X, 200K	Regeneration
Placenta	8X, 200K	Regeneration
Pyrogenium	200K	Drainage



Oxygenation

- Aconite
- Citric acid
- Natrium pyruvicum



Regeneration

- Adrenal
- Solar plexus
- Conjunctive tissue
- Nerve
- Pineal
- Pituitary



Drainage & Detox

- Apis
- Belladonna
- Bryonia
- Pyrogenium

Dosage:

1 - 5 spray(s), 1 - 3 time(s)/day

In crisis, 1 – 3 sprays every 15 minutes

May apply topically

Combinations:

Systemic Dx to assist with stronger drainage

With any of the sensitivity or pain formulas



Infla-w[®]

Indications for Use:

- Helps encourage a reduction of Inflammation
- Calming effect
- May reduce healing crisis
- Pain relief

Item# VPC00281

NDC: 63776-251-15

Formula

50 MI/1.7 oz bottle

100% water

Aconite	200K	Cell respiration
Adrenal gland	8X, 200K	Adrenal Support
Anti-Interleukin 1	6X, 30K	Anti-inflammation
Apis	200K	Inflammation
Belladonna	200K	Drainage
Beta Endorphin	6X, 200K	Pain relief
Bryonia	200K	Drainage
Citric Acid	30K	Cell respiration
Coeliac Plex	8X, 200K	Neurological support
IL-10	8X, 200K	Anti-inflammation
Mesenchyme	6X, 200K	Regeneration
Natrium Pyruvicum	30K	Cell respiration
Pineal	30K	Regeneration
Pituitary	6X, 200K	Regeneration
Pyrogenium	200K	Drainage
Transforming Growth Factor-1	5C, 30K	Immune support
Transforming Growth Factor-3	5C, 30K	Regeneration



Oxygenation

•Aconite
•Citric acid
•Nat pyru



Regeneration

•Adrenal
•Coeliac plex
•Mesenchyme
•Pineal
•Pituitary
•TGF-1
•TGF-3



Drainage & Detox

•AIL-1
•Apis
•Belladonna
•Beta endorphin
•Bryonia
•IL-10
•Pyrogenium

Dosage:

1 - 5 spray(s), 1 - 3 time(s)/day

In crisis, 1 – 3 sprays every 15 minutes

May apply topically

Combinations:

Systemic Detox to assist with stronger drainage

With any of the sensitivity or pain formulas

Intra-Cell[®]

Indications for Use:

- Homeopathic preparation
- Improves metabolism
- Cellular communication
- Assists Krebs cycle process, energy production, re-animation & support
- Encourage intra cellular cleansing & revitalization
- Cellular respiration

Item# VPC0280

NPN: 80053557

Formula

50 MI/1.7 Oz bottle
20% Alcohol

Alpha Lipoic acid	30K	Anti-aging
Calcium Chloride	30K	Cell respiration
cAMP	30K	Intra-Cell support
Citric Acid	30K	Cell respiration
Colchicum autumnale	6X, 200K	Drainage
Conium	30K	Anti-inflammatory
Cuprum sulfuricum	30K	anti-spasmodic
Ferrum citricum	30K	cell respiration
Fumaric acid	30K	cell respiration
Kali oxalicum	30K	cell respiration
Lactic acid	30K	cell respiration
Magnesium phosphoricum	30K	pain relief
Manganum phosphoricum	30K	cellular support
Mercurius solubilis	30K	drainage
Methylene blue	30K	drainage
Natrium oxalaceticum	30K	cell respiration
Natrium Pyruvicum	30K	cell respiration
Niacinamide	30K	Anti oxidant
Phosphorous	30K	drainage
Podophyllinum	30K	drainage
Quinine salicylate	30K	cellular support
RNA	30K	regeneration
Selenium	30K	nutritional support
Succinic acid	30K	cell respiration
Sulfur	30K	drainage
Vitamins B1, B2, B6	30K	nutritional support
Zincum gluconicum	30K	regeneration



Oxygenation

- Calcium chloride
- cAMP
- Citric acid
- Ferrum citricum
- Fumaric acid
- Kali oxalicum
- Lactic acid
- Manganum phosphoricum
- Natrium oxalaceticum
- Natrium Pyruvicum
- Selenium
- Succinic acid



Regeneration

- Alpha Lipoic
- Calcium chloride
- cAMP
- Ferrum citricum
- Quinine salicylate
- RNA
- Selenium
- Vitamins B1, B2, B6
- Zincum gluconicum



Drainage & Detox

- Colchicum
- Conium
- Cuprum sulfuricum
- Magnesium phosphoricum
- Mercurius solubilis
- Methylene blue
- Phosphorous
- Podophyllinum
- Quinine salicylate
- Sulfur

Dosage:

1 - 5 spray(s), 1 - 3 time(s)/day

Copyright Viatrex 2021

Combinations:

Systemic Dx to assist with stronger drainage

With any formula where energy is lacking and/or cellular function appears compromised.

It-Hurts[©]

Indications for Use:

- Aches
- Pains
- Inflammation

Item# VPC0290

NDC: 63776-271-15

Formula

50 MI/ 1.7oz bottle

20% Alcohol

AIL-1	200K	Anti-Inflammatory
Apomorphine	200K	Pain relief
Beta Endorphin	200K	Pain relief



Oxygenation



Regeneration

- AIL-1
- Apomorphine
- Beta-Endorphin



Drainage & Detox

Dosage:

1 - 5 spray(s), 1 - 3 time(s)/day

1 spray every 15 minutes during crisis

Combinations:

Other **Viatrex Pain & Sports Medicine** products

Systemic Detox for general drainage of system and to enhance healing

Ki-Diab[©]

Indications for Use:

- Homeopathic preparation
- Renal sclerosis due to hyperglycemia, hypertension
- Tissue intoxication from elevated serum glucose
- General sclerosing of vessels
- May be indicated for general scarring and sclerosis due to inflammation or adhesions in tissues due to autoimmune diseases

Item# VPC0302

DIN-HM: 80059881

Formula

50 MI/1.7 oz

20% Alcohol

Alpha- ketoglutaric acid	6X, 30K	Cell respiration
Lipoic acid	6X, 30K	Anti-age
5'-(hydrophosphate)	30K	Metabolism
Conium maculatum	30K	Metabolism
Silicea	30K	Drainage



Oxygenation

- Alpha-keto
- Conium



Regeneration

- Alpha-keto
- Lipoic acid
- Conium
- 5'-(hydro)



Drainage & Detox

- Silicea

Dosage:

1-5 spray(s), 1 - 3 time(s)/day

Combinations:

Intra-Cell: for Kreb support and metabolism

Ki-Infla: for isopathic and homeopathic anti-inflammation

Ki-UB: for extra Kidney support

Copyright Viatrexx 2021

Ki-Ht[©]

Indications for Use:

- Homeopathic preperation
- Arrhythmia support
- Edema due to weak heart
- Endocarditis
- Heart cough
- Palpitations with strong sensation in chest
- Post-toxicity cardiomyopathy
- Weak heart due to dilation ,hypertrophy, toxicity or aging

Item# VPC0305

DIN-HM: 80059909

Formula

50 MI/1.7 oz bottle

20% Alcohol

Alpha-ketoglutaric acid	6X, 30K	Metabolism
5'-(hydrophosphate)	12X, 30K	Metabolism
Convallaria majalis	30K	Metabolism
Digitalis purpurea	30K	Heart support
Crataegus	12X, 30K	Heart support
Lipoic acid	6X, 30K	Anti-age
Magnesia carbonica	30K	Heart support
Naja naja	30K	Metabolism



Oxygenation

- Alpha-Keto
- 5'-(hydrophosphate)
- Lipoic acid
- Magnesia Carb
- Naja naja



Regeneration

- Alpha-Ketoglutaric ac
- Convallaria
- Crataegus
- Digitalis
- Lipoic Acid
- Magnesia Carb
- Naja naja



Drainage & Detox

- Digitalis
- Crataegus
- Naja naja

Dosage:

1-5 sprays(s), 1 - 3 time(s)/day

Copyright Viatrexx 2021

Combinations:

Kidney Plus: Herbal kidney & heart support

Intra-Cell: for Kreb support and metabolism

Ki-Diab: if there is sclerosis or scaring of the heart



Ki-Infla[©]

Indications for Use:

- Homeopathic preparation
- Balance of IgA (considered the main cause related to renal impairment)
- Balance symptoms of urinary tract inflammation
- Impairment / kidney problems
- Cellular respiration

Item# VPC301

DIN-HM: 80059862

Formula

50 MI/1.7 oz

20% Alcohol

Apis mellifica	30K Anti-inflammatory
Arsenicum album	30K Drainage
5'-(hydrophosphate)	30K
Curcuma	12X, 30K Immune support
Ichthyolum	30K Inflammation
DL- Lactic acid	30K Cellular respiration
Leptandra virginica	12X, 30K Drainage
Mercurius solubilis	30K Drainage
Salix alba	30K Renal support
Salvia officinalis	12X, 30K Immune support
Terebinthina	30K Renal support



Oxygenation

•DL lactic acid



Regeneration

•Curcuma
•Ichthyolum
•Salix alba
•Salvia
•Terebinthina



Drainage & Detox

•DL lactic acid
•Apis mellifica
•Arsenic album
•Ichthyolum
•Leptandra
•Merc sol

Dosage:

1-5 spray(s), 1 - 3 time(s)/day

Copyright Viatrexx 2021

Combinations:

Infla: anti-inflammatory support

Immunexx: Immune support

KI-UB: Renal support

Viatrexx. www.Viatrexx.ca . T: 1-888-337-8427; F: 1-888-536-1294; Info@Viatrexx.ca.

These statements have not been evaluated by the Government Authorities. This product is not intended to diagnose, treat, cure or prevent any disease.

Ki-UB[©]

Indications for Use:

- Nosode, Organotherapy & homeopathic preparation
- Urinary tract drainage, support & regeneration
- Kidney issues
- Urinary Bladder issues

Item# VPC0304

DIN-HM: 80060750

Formula

50 MI/1.7 oz bottle

20% Alcohol

Nitricum acidum	30K	Urinary drainage
Succinicum acidum	30K	Drainage
Colibacillinum cum natrum mariaticum	30K	
Proteus	30K	
Berberis vulgaris	3X, 30K	Urogenital
Chininum muriaticum	30K	Cell respiration
Equisetum hyemale	3X	Drainage
Hieracium pilosella	12C	Drainage
Kalium nitricum	30K	Drainage
Kidney	30K	Regeneration
Methylene blue	30K	Cell respiration
Ononis spinosa	3X	Drainage
Pareira Brava	3X	Drainage
Plantago major	3X, 30K	Drainage
Sarsaparilla	3X	Drainage
Solidago virgaurea	3X, 30K	Drainage
Ureter	30K	Regeneration
Bladder	30K	Regeneration



Oxygenation

- Chininum muriaticum
- Methylene blue



Regeneration

- Kidney
- Ureter
- Bladder



Drainage & Detox

- Nitricum acidum
- Succinicum acidum
- Berberis vulgaris
- Equisetum hyemale
- Hieracium pilosella
- Kali Nit
- Ononis
- Pareira brava
- Plantago
- Sarsaparilla
- Solidago

Dosage:

1 - 5 spray(s), 1 - 3 time(s)/day

May apply topically

Copyright Viatrex 2021

Combinations:

Mesenchyme, Lymph for a more thorough cleanse

Systemic Dx for deepest cleanse

Ki-Infla or Ki-Diad as needed

Immunexx if infection

Kidney Plus[©]

Indications for Use:

- Arrhythmia support
- Edema due to weak heart
- Endocarditis
- IgA Balancing, immune support
- Dialysis, weak kidney(s)
- Urinary tract inflammation
- Palpitations with strong sensation in chest
- Post-toxicity cardiomyopathy
- Weak heart due to dilation ,hypertrophy, toxicity or aging

Item# VPC0306

Formula

Liquid herbal

NDC: 63776-279-15

50 MI/1.7 oz bottle

20% Alcohol

Angelica Sinensis	Adaptogen, regeneration
Astragalus Membranaceus	Adaptogen, regeneration
Curcumin Longa	Adaptogen, regeneration
Lespedeza Capitata	Adaptogen, regeneration
Nigella sativa	Adaptogen, regeneration
Red Sumac	Adaptogen, regeneration
Rheum Officinalis	Adaptogen, regeneration
Salvia Miltiorrhiza	Adaptogen, regeneration



Oxygenation

- Angelica
- Astragalus
- Curcumin
- Lespedeza
- Nigella
- Sumac
- Rheum
- Salvia



Regeneration

- Angelica
- Astragalus
- Curcumin
- Lespedeza
- Nigella
- Sumac
- Rheum
- Salvia



Drainage & Detox

- Angelica
- Astragalus
- Curcumin
- Lespedeza
- Nigella
- Sumac
- Rheum
- Salvia

Dosage:

12-15 sprays (1 teaspoon), 3 times/day

Copyright Viatrex 2021

Combinations: use with NAC, Alpha Lipoic Ac & Ki-Infla.

Extra Ki support: Ki-Ht, Ki-Diab, Ki-UB

Drainage: Systemic, Ki-UB, Cellulite, Mesenchyme

Immune/inflammation: Immunexx, Infla

Metabolism: Intra-Cell, Adipose

L-Vr[©]

Indications for Use:

- Homeopathic & organotherapy preparation
- Encourage healthy liver function, structure and cleansing
- Adjunct to any anti-inflammatory or drainage protocol
- Congestion relief
- May help ease digestion, before or after meals

Item# VPC0320

NPN: 80053490

Formula

50 ML/1.7 Oz bottle

20% Alcohol

Carduus Benedictus	30K	Drainage
Carduus marianus	30K	Drainage
Ceanothus americanus	6X	Spleen support
Chelidonium	30K	Drainage
Chionanthus virginica	6X	Drainage
Choline	30K	Drainage
Solar plexus	8X, 200K	Neurological support
Duodenum	30K	Drainage
Fumaric acid	30K	Cell respiration
Gall bladder	30K	Regeneration
Kalium sulfuricum	6X, 30K	Drainage
Liver	6X, 200K	Drainage
Lycopodium	30K	Drainage
Natrium oxalaceticum	30K	Cell respiration
Natrium pyruvicum	30K	Cell respiration
Natrium sulphuricum	6X, 30K	Drainage
Niacin	30K	Anti-oxidant
Pancreas	8X, 200K	Regeneration
Spleen	6X, 200K	Regeneration
Taraxacum	30K	Drainage
Vein	30K	Circulatory support
Vitamin B1	30K	Nutritional Support
Vitamin B2	30K	Nutritional Support
Vitamin B6	30K	Adrenal support



Oxygenation

- Fumaric acid
- Natrium oxalaceticum
- Natrium pyruvicum
- Niacin



Regeneration

- Ceanothus americanus
- Solar plexus
- Duodenum
- Gall bladder
- Liver
- Niacin
- Pancreas
- Spleen
- Vein
- Vitamin B1
- Vitamin B2
- Vitamin B6



Drainage & Detox

- Carduus Benedictus
- Carduus marianus
- Chelidonium
- Chionanthus virginica
- Choline
- Duodenum
- Kalium sulfuricum
- Liver
- Lycopodium
- Natrium sulphuricum
- Taraxacum
- Vein

Dosage:

1 - 5 spray(s), 1 - 3 time(s)/day

Combinations:

Systemic Dx to assist with stronger drainage
Any Detox, allergy or pain product

Lymph 1[©]

Indications for Use:

- Homeopathic & organotherapy preparation
- Encourage healthy lymphatic function and cleansing
- Adjunct to any anti-inflammatory or drainage protocol
- Congestion relief

Item# VPC00370

NPN: 80053736

Formula

50 MI/1 Oz bottle

20% Alcohol

Ethylicum	30K	Drainage
Fumaria Off	30K	Drainage
Hepar Sulphuris Calc	30K	Drainage
Kali Carb	30K	Drainage
Lymph Node	30-200K, 50M	
	Lymph Support	
Pinus Sylvestris	30K	Drainage
Piper Nigrum	30K	Drainage
Prunus Spinosa	30K	Drainage
Silicia	6X, 30-200K, 50M	
	Drainage	
Spleen	6X, 30-200K, 50M	
	Immune Support	
Sulphuricum Acidum	30K	Drainage
Tilia Tomentosa	30K	
	Neurological Support	



Oxygenation



Regeneration

- Lymph Node
- Spleen
- Tilia Tomentosa



Drainage & Detox

- Ethylicum
- Fumaria Off
- Hepar Sulphuris Calc
- Kali Carb
- Lymph Node
- Pinus Sylvestris
- Piper Nigrum
- Prunus Spinosa
- Silicia
- Sulphuricum Acidum

Dosage:

1 - 5 spray(s), 1 - 3 time(s)/day

Combinations:

Systemic Dx to assist with stronger drainage
Any Detox, allergy or pain product

Copyright Viatrexx 2021



Male +[©]

Indications for Use:

- Organotherapy & homeopathic preparation
- Encourages a healthy male hormonal system

Item# VPC0400

NPN: 80057233

Formula

50 MI/1.7 Oz bottle

20% Alcohol

Adrenal gland	6X, 200K	Adrenal support
cAMP	6X, 200K	Intra-Cellular support
Cholesterol	6X, 200K	Drainage
Hypothalamus	6X, 200K	Regeneration
Pancreas	6X, 200K	Regeneration
Pineal gland	6X, 200K	Regeneration
Pituitary	6X, 200K	Regeneration
Prostate	6X, 200K	Regeneration
Testis	6X, 200K	Regeneration
Thalamus	6X, 200K	Regeneration
Thymus	6X, 200K	Regeneration
Thyroid	6X, 200K	Regeneration



Oxygenation

•cAMP



Regeneration

•Adrenal
•Hypothalamus
•Pancreas
•Pineal
•Pituitary
•Prostate
•Testis
•Thalamus
•Thymus
•Thyroid



Drainage & Detox

•Cholesterol

Dosage:

1 - 5 spray(s), 1 - 3 time(s)/day

Copyright Viatrex 2021

Combinations:

Systemic Dx to assist with stronger drainage

With any formula where energy is lacking and/or cellular function appears compromised.

Viatrex. www.Viatrex.ca . T: 1-888-337-8427; F: 1-888-536-1294; Info@Viatrex.com.

These statements have not been evaluated by the Government Authorities. This product is not intended to diagnose, treat, cure or prevent any disease.

Mesenchyme[©]

Indications for Use:

- Organotherapy & homeopathic preparation
- Matrix/connective tissue drainage & support
- Nerve drainage & support
- Lymphatic drainage & support
- Cellular communication
- Connective tissue health and regeneration
- Skin health and healing
- Circulatory health & support

Item# VPC0092

NPN: 80061024

Formula

50 MI/1.7 oz bottle

20% Alcohol

Adrenal gland	6X, 200K	Adrenal support
Fucus vesiculosus	3X, 30K	Lymph support
Hyaluronidase	6X, 30K	Tissue repair & regeneration
DL-Lactic acid	30K	Cell respiration
Lymph node	30K	Immune support
Conjunctive tissue	6X, 30K	Regeneration
NAD	30K	Cell respiration
Natrum oxalaceticum	30K	Cell respiration
Natrum pyruvicum	30K	Cell respiration
Natrum sulphuricum	6X, 200K	Drainage
Pyrogenium	30K	Drainage
Thuja occidentalis	6X, 200K	Drainage



Oxygenation

- DL-Lactic acid
- NAD
- Natrum oxa
- Natrium pyr



Regeneration

- Adrenal gland
- Hyaluronidase
- DL-Lactic ac
- Lymph node
- Conjunctive tissue
- NAD
- Natrum Oxa
- Natrium Pyr



Drainage & Detox

- DL-Lactic acid
- Lymph node
- Conjunctive tissue
- Natrium Sulph
- Phenylalanine
- Pyrogenium
- Thuja

Dosage:

1 - 5 spray(s), 1 - 3 time(s)/day

May apply topically

Copyright Viatrex 2021

Combinations:

With Intra-cell, Lymph & an organ detox (Lv, Ki, GI)

Background to Systemic Dx

1 mth on, 1 mth off as General maintenance

MuSkel[®]

Indications for Use:

- Organotherapy & homeopathic preparation
- Muscle & skeletal tissue repair & regeneration
- Improve neurological communication
- Suggested to strengthen bones, cartilage, joints, muscles & tendons
- May be helpful for muscular, structural and neurological pain
- Supports healthy growth

Item# VPC0420

NPN: 80060928

Formula

50 MI/1.7 oz bottle

20% Alcohol

Ankle Articulation	6X, 200K	Regeneration
Articular Capsule	8X, 200K	Regeneration
Coeliac Plexus	8X, 200K	Regeneration
Frontal Lobe	8X, 200K	Regeneration
Hip Articulation	8X, 200K	Regeneration
Hippocampus	8X, 200K	Regeneration
Hypothalamus	8X, 200K	Regeneration
Insulin	12C, 200K	
Muscle	6X, 200K	Regeneration
Nerve	8X, 200K	Regeneration
Spinal Cord	6X, 200K	Regeneration
Sympathetic trunk	8X, 200K	Regeneration



Oxygenation

•Insulin



Regeneration

•Ankle Articulation
•Articular Capsule
•Coeliac Plexus
•Frontal Lobe
•Hip Articulation
•Hippocampus
•Hypothalamus
•Insulin
•Muscle
•Nerve
•Spinal Cord
•Sympathetic trunk



Drainage & Detox

•Insulin

Dosage:

1 - 5 spray(s), 1 - 3 time(s)/day

Copyright Viatrex 2021

Combinations:

Ou-CH to assist with pain and inflammation

Systemic Dx for general drainage of system and to enhance healing

Other **Viatrex Pain & Sports Medicine** products.

Neuro[®]

Indications for Use:

- Depressive states
- Dyslexia
- Mental clarity & memory
- Nervousness
- Obsessive compulsive behavior
- Sleep regulation / shift work
- Weight control

Item# VPC0460

NDC: 63776-375-15

Formula

50 MI/1.7 oz bottle

20% Alcohol

Dopamine	6X, 200K	Neurological support
Ferrum Ars	30K	Energy
Jequirity	30K	Drainage
Juniper Sabina	30K	Drainage
L-Dopa	6X, 200K	Neurological support
Melatonin	6X, 200K	Neurological support
Rubia	3X	Immune support
Serotonin	6X, 200K	Neurological support
Taurine	6X, 200K	Drainage
Upas Antiaris	30K	Drainage



Oxygenation

•Ferrum
Arsenicium
•Rubia



Regeneration

•Dopamine
•L-Dopa
•Melatonin
•Rubia
•Serotonin



Drainage & Detox

•Jequirity
•Juniper
•Taurine
•Upas
Antiaris

Dosage:

1 - 5 spray(s), 1 - 3 time(s)/day

In crisis, 1 – 3 sprays every 15 minutes

Combinations:

Systemic Detox to assist with stronger drainage

Neuro 3 for a more comprehensive neurological balancing

One of the **Viatrex Sensitivity** or **system drainage** products for targeted **Drainage & Detox**.

Neur-AutonomieXX[®]

Indications for Use:

- Autonomic nervous system support.*

Item# DS0466

Dietary Supplement

Formula

50 MI/1 Oz bottle

20% Alcohol

Proprietary Mico Blend of the following essences:

5-Hydroxytryptophan, Choline chloride, Glutamic acid, L-Glycine, L-Histidine, L-Dopa, Melatonin, Octopamine, Phenylalanine, Taurine, Tryptophan, Tyrosine.



Metabolism

- 5-Hydroxytryptophan
- Glycine
- Serotonin



Regeneration

- Dopamine
- Glutamic acid
- Histidine
- L-Dopa
- Melanin
- Melatonin
- Norepinephrine
- Phenylalanine
- Serotonin
- Tryptophan
- Tyrosine



Drainage & Detox

- Choline chloride
- Nitric oxide
- O-Methyl serotonin
- Octopamine
- Taurine

Dosage:

1 - 5 spray(s), 1 - 3 time(s)/day

In crisis, 1 – 3 sprays every 15 minutes

Copyright Viatrex 2021

Combinations:

Systemic Detox to assist with stronger drainage

One or a combination of the **Viatrex Sensitivity** &/or **system Drainage** products for targeted **Drainage & Detox**.

Osteo[®]

Indications for Use:

- Organotherapy preparation
- Bone health
- Nerve & muscle function
- Foster higher bone density & bone strength

VPC0490

NPN: 80057176

Formula

50 MI/1.7 Oz bottle
20% Alcohol

Bone	6X, 30K	Regeneration
Cartilage	6X, 200K	Regeneration
Parathyroid	6X, 200K	Regeneration



Oxygenation



Regeneration

- Bone
- Cartilage
- Parathyroid



Drainage & Detox



Dosage:

1 - 5 spray(s), 1 - 3 time(s)/day

Copyright Viatrex 2021

Combinations:

Ou-CH to assist with pain and inflammation

Systemic Dx for general drainage of system and to enhance healing . Other **Viatrex Pain & Sports Medicine** as well as **Immune** products.

Ou-CH[©]

Indications for Use:

- Organotherapy & homeopathic preparation
- Pain
- Inflammation
- Improve neurological communication
- Joint, muscular and neurological pain
- Bruising
- Pre & Post operation
- Strains & sprains

Item# VPC0500

NPN: 80060941

Formula

50 MI/1.7 oz bottle
20% Alcohol

Apomorphine	12CH, 30K	Pain relief
Arnica Montana	3X	Injury relief
Bryonia	4X	Drainage
Hypericum perforatum	3X	Neurological support
Hypothalamus	5X	Regeneration
Limbic System	6X, 200K	Regeneration
Nerve	6X, 30K	Regeneration
Pituitary Gland	6X	Regeneration

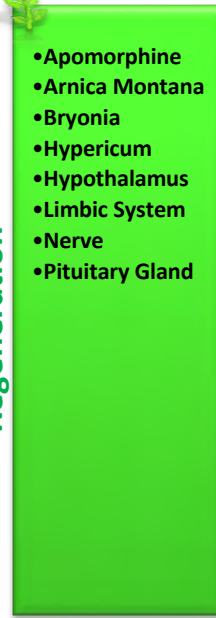


Oxygenation



Regeneration

- Apomorphine
- Arnica Montana
- Bryonia
- Hypericum
- Hypothalamus
- Limbic System
- Nerve
- Pituitary Gland



Drainage & Detox

- Arnica Montana
- Bryonia
- Hypericum



Dosage:

1 - 5 spray(s), 1 - 3 time(s)/day

1 spray every 15 minutes during crisis

May spray directly on the desired area

Combinations:

Other **Viatrex Pain & Sports Medicine** products

Systemic Dx for general drainage of system and to enhance healing

Copyright Viatrex 2021

P'sites[©]

Indications for Use:

- Homeopathic preparation
- Parasitic & worm issues
- Irritable, nervous, twitchy
- Restless sleep

Item# VPC0545

DIN-HM: 80057876

Formula

50 MI/1.7 Oz bottle
20% Alcohol

Artemisia vulgaris	2X, 30K	Vermifuge
Calcarea Carbonica	12X	Drainage
Cina	2X, 30K	Anti-parasitic
Graphite	12X, 200K	Drainage
Iodium	12X, 200K	Immune support
Juglans regia	2X, 30K	Anti-parasitic
Melilotus Officinalis	3X, 200K	Drainage
Mercurius Corrosivus	12X, 200K	Drainage
Quassia Amara	2X, 30K	Vermifuge
Sabadilla	12X, 30K	Drainage
Silicea	6X, 200K	Drainage
Spigelia anthelmia	2X, 30K	Anti-parasitic
Teucrium marum	3X, 200K	Regeneration



Oxygenation



Regeneration

•Iodium
•Teucrium
marum



Drainage & Detox

•Artemisia
vulgaris
•Calcarea
Carbonica
•Cina
•Graphite
•Juglans regia
•Melilotus Off.
•Mercurius Cor.
•Quassia Amara
•Sabadilla
•Silicea
•Spigelia
anthelmia

Dosage:

1 - 5 spray(s), 1 - 3 time(s)/day

Copyright Viatrex 2021

Combinations:

Am'bas for amoeba issues

Systemic Dx to reduce the toxic load & strains on body

Immunexx for immune support

Pets[©]

Indications for Use:

- Sensitivities to household and farm animals
- {Includes fur, feathers, saliva, dander and oils from pets}
- Th 1 – Th 2 balance
- Adrenal support
- Immune support
- Lymphatic drainage

Item# VPC0547

Formula

NDC: 63776-420-15

50 MI/1.7 oz bottle

20% Alcohol

Adrenal Gland	6X, 200K	Adrenal support
Allersode Animals	30X, 200K	Immune support
Apis	30K	Anti-inflammation
Ethylicum	30K	Drainage
Fumaria Officinalis	30K	Drainage
Hepar Sulphuris Calcareum	30K	Drainage
Histamine	6X, 200K	Ig support
IL- 12	10X, 200K	Immune support
Interferon gamma, 3 parts	9X, 200K	Immune support
Kali Carbonicum	30K	Drainage
Lymph nodes	6X, 200K	Immune support
Manganese	12X	Regeneration
Pinus Sylvestris	30K	Regeneration
Piper Nigrum	30K	Drainage
Prunus Spinosa	30K	Drainage
Serotonin	6X, 200K	Immune support
Silicea	6X, 200K	Drainage
Spleen	6X, 200K	Regeneration
Sulphuricum Acidum	30K	Drainage
Thymus	6X, 200K	Immune support
Tilia Tomentosa	30K	Neurological support



Oxygenation

• Apis



Regeneration

• Adrenal
• Gallic Acid
• Histamine
• IL - 12
• Inf gamma
• Lymph
• Manganese
• Pinus Sylvestris
• Serotonin
• Spleen
• Thymus
• Tilia Tomentosa



Drainage & Detox

• Allersode Animals
• Ethylicum
• Fumaria
• Hepar Sulph Calc
• Kali Carbonicum
• Piper Nigrum
• Prunus Spinosa
• Quercetin
• Rutin
• Salsolinol
• Silicea
• Sulphuricum Acidum

Dosage:

1 - 5 spray(s), 1 - 3 time(s)/day

In crisis 1 spray every 15 minutes to 1 hour

Copyright Viatrex 2021

Combinations:

Relief 3 & Relief + to assist with symptomatic support

Systemic Detox to reduce the toxic load & strains on body

Immunexx for immune support

Pigmentation[©]

Indications for Use:

- Vitiligo, hyper pigmentation due to scarring
- Solar lentigo (liver spots)
- Depigmentation

Item# VPC0550

NDC: 63776-410-15

Formula

50 MI/1.7 oz bottle

20% Alcohol

Adrenal	30K	Adrenal support
Azelaic	30K	Adaptogen
Cu	200K	Nutritional support
Cutis	30K	Regeneration
Cystein	30K	Drainage
Epithelial GF	200K	Regeneration
Fumaric acid	30K	Cell respiration
Glutathione	200K	Anti-oxidant
Glycolic acid	30K	Cell respiration
Kalium aspariticum	30K	Cell respiration
Lymph node	8X, 200K	Immune support
Melanine	200K	Neurological support
Nat oxali	30K	Cell respiration
Nat pyruvi	30K	Cell respiration
Phenylalanin	200K	Amino Acid Support
Quinhydrone	30K	Cell respiration
Succinic acid	30K	Cell respiration
Thuja	30K	Drainage
Tyrosine	30K	Amino Acid Support
Vitamin C	8X, 30K	Nutritional support
Zn	30K	Neurological support



Oxygenation

•Adrenal
•EGF
•Krebs
•Glutathione
•Vitamin C
•Zn



Regeneration

•Adrenal
•Azelaic
•Cu
•Cutis
•EGF
•Krebs
•Glutathione
•Lymph node
•Melanine
•Phenylalanin
•Thuja
•Tyrosine
•Vitamin C
•Zn



Drainage & Detox

•Adrenal
•EGF
•Krebs
•Glutathione
•Lymph node
•Melanine
•Phenylalanin
•Thuja
•Tyrosine
•Vitamin C

Dosage:

1 - 5 spray(s), 1 - 3 time(s)/day

May apply topically

Combinations:

Improve skin drainage: Mesenchyme, Derma

Improve skin metabolism: Prolo, Intra-Cell, Adipose

Scarring: Prolo, Connectissue, Collagen

Pollens Early[©]

Indications for Use:

- Early season Pollens sensitivities {**Trees & shrubs**}
- Th 1 – Th 2 balance
- Adrenal support
- Immune support
- Lymphatic drainage

Early-season Allersode includes: ash, aspen, birch, black walnut, box elder, cedar, cottonwood, elm, hemlock, juniper, maple, mesquite, mulberry, oak, pinon, ponderosa, pussy willow, spruce, willow, winterfat.

Item# VPC0553

NDC: 63776-440-15

Formula

50 MI/1.7 oz bottle

20% Alcohol

Adrenal Gland	6X, 200K	Adrenal support
Apis	30K	Anti-inflammation
Early season Allersode	6X, 200K	Immune support
Ethylicum	30K	Drainage
Fumaria Officinalis	30K	Drainage
Gallic Acid	6X, 200K	Immune support
Hepar Sulphuris Calcareum	30K	Drainage
Histamine	6X, 200K	Ig support
IL- 12	10X, 200K	Immune support
Interferon gamma	9X, 200K	Immune support
Kali Carbonicum	30K	Drainage
Lymph nodes	6X, 200K	Immune support
Manganese	12X	Regeneration
Pinus Sylvestris	30K	Regeneration
Piper Nigrum	30K	Drainage
Prunus Spinosa	30K	Drainage
Quercetin	6X, 200K	Drainage
Rutin	6X, 200K	Drainage
Salsolinol	6X, 200K	Drainage
Silicea	6X, 200K	Drainage
Spleen	6X, 200K	Regeneration
Sulphuricum Acidum	30K	Drainage
Thymus	6X, 200K	Immune support
Tilia Tomentosa	30K	Neurological support



• Apis

Oxygenation



Regeneration

• Adrenal
• Gallic Acid
• Histamine
• IL - 12
• Inf gamma
• Lymph
• Manganese
• Pinus Sylvestris
• Spleen
• Thymus
• Tilia Tomentosa



Drainage & Detox

• Early season Allersode
• Ethylicum
• Fumaria
• Hepar Sulph Calc
• Kali Carbonicum
• Piper Nigrum
• Prunus Spinosa
• Quercetin
• Rutin
• Salsolinol
• Silicea
• Sulphuricum Acidum

Dosage:

1 - 5 spray(s), 1 - 3 time(s)/day

In crisis 1 spray every 15 minutes to 1 hour

Copyright Viatrex 2021

Combinations:

Relief 3 & Relief + to assist with symptomatic support

Systemic Detox to reduce the toxic load & strains on body

Immunexx for immune support

Pollens Mid[®]

Indications for Use:

- Mid season Pollens sensitivities {Grasses, Dandelion & Sorel}
- Th 1 – Th 2 balance
- Adrenal support
- Immune support
- Lymphatic drainage
- Mid-Season Allersode includes: Alfalfa, Bermuda, Blue Grass, corn, creosote, dandelion, dock sorrel, fescue, greasewood, June grass, locust, marsh elder, Russian olive, rye grass, salt cedar, Shadescale, Timothy, vernal grass.

Item# VPC0555

Formula

50 MI/1.7 Oz bottle

20% Alcohol

Adrenal Gland	6X, 200K	Adrenal support
Allersode Mid season	6X, 200K	Immune support
Apis	30K	Anti-inflammation
Ethylicum	30K	Drainage
Fumaria Officinalis	30K	Drainage
Gallic Acid	6X, 200K	Immune support
Hepar Sulphuris Calcareum	30K	Drainage
Histamine	6X, 200K	Ig support
IL- 12	10X, 200K	Immune support
Interferon gamma	9X, 200K	Immune support
Kali Carbonicum	30K	Drainage
Lymph glands	6X, 200K	Immune support
Manganese	12X	Regeneration
Pinus Sylvestris	30K	Regeneration
Piper Nigrum	30K	Drainage
Prunus Spinosa	30K	Drainage
Quercetin	6X, 200K	Drainage
Rutin	6X, 200K	Drainage
Salsolinol	6X, 200K	Drainage
Serotonin	6X, 200K	Immune support
Silicea	6X, 200K	Drainage
Spleen	6X, 200K	Regeneration
Sulphuricum Acidum	30K	Drainage
Thymus	6X, 200K	Immune support
Tilia Tomentosa	30K	Neurological support

Dosage:

1 - 5 spray(s), 1 - 3 time(s)/day

In crisis 1 spray every 15 minutes to 1 hour

Copyright Viatrexx 2021



Oxygenation

• Apis



Regeneration

• Adrenal
• Gallic Acid
• Histamine
• IL - 12
• Inf gamma
• Lymph
• Manganese
• Pinus Sylvestris
• Serotonin
• Spleen
• Thymus
• Tilia Tomentosa



Drainage & Detox

• Allersode Mid season
• Ethylicum
• Fumaria
• Hepar Sulph Calc
• Kali Carbonicum
• Piper Nigrum
• Prunus Spinosa
• Quercetin
• Rutin
• Salsolinol
• Silicea
• Sulphuricum Acidum

Combinations:

Relief 3 & Relief + to assist with symptomatic support

Systemic Detox to reduce the toxic load & strains on body

Immunexx for immune support

Pollens Late[©]

Indications for Use:

- Late season Pollens sensitivities {**Weeds & Brush**}
- Th 1 – Th 2 balance
- Adrenal support
- Immune support
- Lymphatic drainage
- Late season allersode includes: Brome, broom-weed, careless-weed, cocklebur, corn pollen, fire-bush, goldenrod, grama, hemp, Johnson grass, lambs-quarter, pigweed, nettle, plantain, rabbit-brush, ragweed, Russian thistle, sage, snake-weed.

Item# VPC0554

NDC: 63776-442-15

Formula

50 MI/1.7 oz bottle

20% Alcohol

Adrenal Gland	6X, 200K	Adrenal support
Allersode Late season	6X, 200K	Immune support
Apis	30K	Anti-inflammation
Ethylicum	30K	Drainage
Fumaria Officinalis	30K	Drainage
Gallic Acid	6X, 200K	Immune support
Hepar Sulphuris Calcareum	30K	Drainage
Histamine	6X, 200K	Ig support
IL- 12	10X, 200K	Immune support
Interferon gamma	9X, 200K	Immune support
Kali Carbonicum	30K	Drainage
Lymph glands	6X, 200K	Immune support
Manganese	12X	Regeneration
Pinus Sylvestris	30K	Regeneration
Piper Nigrum	30K	Drainage
Prunus Spinosa	30K	Drainage
Quercetin	6X, 200K	Drainage
Rutin	6X, 200K	Drainage
Salsolinol	6X, 200K	Drainage
Serotonin	6X, 200K	Immune support
Silicea	6X, 200K	Drainage
Spleen	6X, 200K	Regeneration
Sulphuricum Acidum	30K	Drainage
Thymus	6X, 200K	Immune support
Tilia Tomentosa	30K	Neurological support



• Apis

Oxygenation



Regeneration

• Adrenal
• Gallic Acid
• Histamine
• IL - 12
• Inf gamma
• Lymph
• Manganese
• Pinus Sylvestris
• Serotonin
• Spleen
• Thymus
• Tilia Tomentosa



Drainage & Detox

• Allersode Late season
• Ethylicum
• Fumaria
• Hepar Sulph Calc
• Kali Carbonicum
• Piper Nigrum
• Prunus Spinosa
• Quercetin
• Rutin
• Salsolinol
• Silicea
• Sulphuricum Acidum

Dosage:

1 - 5 spray(s), 1 - 3 time(s)/day

In crisis 1 spray every 15 minutes to 1 hour

Copyright Viatrex 2021

Combinations:

Relief 3 & Relief + to assist with symptomatic support

Systemic Detox to reduce the toxic load & strains on body

Immunexx for immune support

Prolo[®]

Indications for Use:

- Soft tissue & joint repair and regeneration
- Organ & gland support and regeneration
- Pro inflammatory stimulation with Krebs intermediates for stuck systems
- Increases metabolism
- Add to PRP for extra effectiveness
- Pain relief

Item# VPC0558

NDC: 63776-443-15

Formula

50 ml / 1.7 oz

Adrenal	8X, 200K	Adrenal support
Alpha Ketoglutaric Acid	8X, 30K	Cell respiration
Alpha Lipoic Acid	8X, 30K	Anti-aging
Apomorphine	10X, 30K	Pain
Arnica Montana	5X	Injury relief
Articulation Capsule	10X, 200K	Regeneration
Ascorbic Acid	10X, 30K	Anti-oxidant
bFGF	11X, 200K	Regeneration
BDNF	8X, 200K	Regeneration
Beta Endorphin	11X, 200K	Pain relief
Bryonia	6X	Drainage
Cartilage	8X, 200K	Regeneration
Colchicum Automnale	6C, 200K	Drainage
Collagen	10X, 200K	Regeneration
Co-Q 10	30K	Cell respiration
Erythrocytes	8X, 200K	Immune
IL-1	8X	Pro inflammation
IL-3	14X, 200K	Immune support
Mesenchyme	8X, 200K	Regeneration
Muscle	8X, 200K	Regeneration
Nadid	30K	Cell respiration
Nerve	8X, 200K	Regeneration
Pituitary gland	30K	Regeneration
Placenta	8X, 200K	Regeneration
Quinhydrone	30K	Energy support
Tendon	8X, 30K	Regeneration
Transforming Growth Factor-2	11X, 200K	Regeneration
Vitamin B1	30K	Nutritional Support
Vitamin B12	30K	Nutritional Support
Vitamin B2	30K	Nutritional Support
Vitamin B3	30K	Nutritional Support
Vitamin B5	30K	Nutritional Support
Vitamin B6	30K	Adrenal support
Vitamin B9	30K	Nutritional Support
Vitamin E	30K	Nutritional Support

Dosage:

1 - 5 spray(s), 1 - 3 time(s)/day

Copyright Viatrex 2021



Oxygenation

- Alpha Keto
- Alpha Lipoic
- Ascorbic ac
- BDNF
- Beta Endorphin
- Co-Q 10
- IL-1
- IL-3
- Nadid
- Pituitary
- Quinhydrone
- Vitamin B's



Regeneration

- Adrenal
- Alpha Keto
- Alpha Lipoic
- Apomorphine
- Arnica
- Articulation cap
- Ascorbic ac
- bFGF
- BDNF
- Beta Endorphin
- Bryonia
- Cartilage
- Colchicum
- Collagen
- Co-Q 10
- Erythrocytes
- Mesenchyme
- Muscle
- Nadid
- Nerve
- Pituitary
- Placenta
- Tendon
- TGF-2
- Vitamin B's
- Vitamin E



Drainage & Detox

- Arnica
- Ascorbic ac
- BDNF
- Bryonia
- Colchicum
- Co-Q10
- Mesenchyme
- Nadid
- Quinhydrone
- Vitamin B's

Combinations:

Goal is to slightly expand the environment it is applied to, allowing the region to be flooded with a multi-dimensional nutrients, growth factors, pain relief & adaptogenic energy & circulatory enhancing molecules to help re-establish circulation, nourish the environment & encourage repair & regeneration. As inflammation retracts the area is now rich in what it needs to be healthy and kick start repair & regeneration.

Add to all: repair, regenerative mixes (pain/sport/aesthetic/organ/gland).

Prolo-Neural[®]

Indications for Use:

- Neurological support, repair and regeneration
- Nervous system, Organ & gland support and regeneration
- Add to PRP for extra effectiveness & directed stem cell conversion.
- Nerve damage

Item# VPC0464

NDC: 63776-374-15

Formula

50 ml / 1.7 oz

Adrenal	8X, 200K	Adrenal support
BDNF	6X, 200K	Regeneration
Beta Endorphin	6X, 200K	Pain relief
Coeliac plexus	8X, 200K	Neurological
Nerve	6X, 200K	Regeneration
Pituitary gland	6X, 200K	Regeneration
Sympathetic trunk	8X, 200K	Neurological



Oxygenation

- Adrenal
- BDNF
- Beta Endorphin
- Pituitary



Regeneration

- Adrenal
- BDNF
- Beta Endorphin
- Coeliac plexus
- Nerve
- Pituitary
- Sympathetic trunk



Drainage & Detox

- BDNF

Dosage:

1 - 5 spray(s), 1 - 3 time(s)/day
or more as required

Copyright Viatrex 2021

Combinations:

Goal is to provide the scaffolding and regenerative components to support, repair, regenerate and maintain the nervous system.

Combine with 1 or more of the following depending on clinical picture:

Nerve pain: MuSkel

Tension pain: Ou-Ch

Inflammatory challenges: Infla

Neurological communication support: Neuro 3

Radiation[©]

Indications for Use:

To address challenges arising from exposure to:

- radioactive or nuclear substances
- X-rays
- chemotherapy
- radiation therapy
- airport security checks
- cell phones
- computers
- EMF devices

Item# VPC0605

Formula

NDC: 63776-452-15

50 MI/1.7 oz bottle

20% Alcohol

Cadmium Iod	30K	Endocrine support & drainage
Fucus Ves (Kelp)	3X	Drainage
Iodine	12X	Thyroid support
Irish Moss	3X	Regeneration
Radium Brom	30K	Drainage
Strontium	30K	Drainage
Thyroid	200K	Thyroid support
X-Ray	30K	Drainage



Oxygenation



Regeneration

- Cadmium Iod
- Iodine
- Irish Moss
- Thyroid



Drainage & Detox

- Cadmium Iod
- Fucus Ves
- Radium Brom
- Strontium
- X-Ray

Dosage:

1 - 5 spray(s), 1 - 3 time(s)/day

Combinations:

Thyroid for thyroid support

Systemic Detox to reduce the toxic load & strains on body

Immunexx for immune support

Relief 3[©]

Indications for Use:

- Allergic-Sensitivity reactions
- Mental clarity
- Background remedy to any drainage, detox, sensitivity or supportive remedy, reduces reactions/healing crisis's

Item# VPC0610

Formula

Choline chloride
Histamine
Serotonin

NDC: 63776-453-15

50 MI/1.7 oz bottle

20% Alcohol

15X, 200K Mental clarity
15X, 200K IG support
15X, 200K Neurological support



Oxygenation

- Histamine
- Serotonin



Regeneration

- Choline chloride
- Histamine
- Serotonin



Drainage & Detox

- Choline chloride

Dosage:

1 - 5 spray(s), 1 - 3 time(s)/day

In crisis, 1 – 3 sprays every 15 minutes

Combinations:

Systemic Detox to assist with stronger drainage

Foods for food sensitivities

Pets for animal sensitivities

Pollen mixes

Relief 3-G12[®]

Indications for Use:

- Allergic-Sensitivity reactions
- Up regulates TH1 to balance with TH2
- Immune enhancement
- Mental clarity
- Background remedy to any drainage, detox, sensitivity or supportive remedy

Item# VPC0611

Formula

Choline chloride
Histamine
Interferon gamma

IL-12

Serotonin

NDC: 63776-454-15

50 MI/1.7 oz bottle

20% Alcohol

15X, 200K Mental clarity
15X, 200K IG support
9X, 200K Immune support
10X, 200K Immune support
15X, 200K Neurological support



Oxygenation

- Histamine
- Serotonin



Regeneration

- Choline chloride
- Histamine
- INF γ
- IL-12
- Serotonin



Drainage & Detox

- Choline chloride

Dosage:

1 - 5 spray(s), 1 - 3 time(s)/day

In crisis, 1 – 3 sprays every 15 minutes

Combinations:

Systemic Detox to assist with stronger drainage

With any of the sensitivity formulas: **Foods** for food sensitivities
Pets for animal sensitivities; **Pollen mixes**; **Environmental**; **single phenolics...**

Relief +[©]

Indications for Use:

- Homeopathic preparation
- Allergic-Sensitivity reactions
- Emotional implications
- Calming
- Helps provide a gentler drainage with fewer reactions
- Mental clarity
- Background remedy to any drainage, detox, sensitivity or supportive remedy which has an emotional component

Item# VPC0615

DIN-HM: 80061034

Formula

50 MI/1.7 oz bottle

20% Alcohol

In 15X, 200K

Choline

Mental clarity

Histamine hydrochloride

IG support

In 6X, 200K

Cherry-Plum

Emotional support

Clematis

Faintness

Impatiens

Neurological support

Rock Rose

Emotional support

Star-of-Bethlehem

Trauma support



Oxygenation

•Histamine



Regeneration

•Choline
•Histamine
•Impatiens
•Star-of-Bethlehem
•Cherry-Plum
•Rock Rose
•Clematis



Drainage & Detox

•Choline

Dosage:

1 - 5 spray(s), 1 - 3 time(s)/day

In crisis, 1 – 3 sprays every 15 minutes

Combinations:

Systemic Dx: to assist with stronger drainage

F'ds: for food sensitivities

Pts: for animal sensitivities

P'llen mixes

Relief +G12[©]

Indications for Use:

- Organotherapy & homeopathic preparation
- Allergic-Sensitivity reactions with emotional component
- Emotional implications, Calming
- Immune support
- Mental clarity
- Background remedy to any drainage, detox, sensitivity or supportive remedy

Item# VPC0616

NPN: 80061036

Formula

50 MI/1.7 oz bottle

20% Alcohol

Choline	15X, 200K	Mental clarity
Histamine hydrochloride	15X, 200K	IG support
Lymph node	6X, 30K	Immune support
Peyer's patches	6X, 200K	Immune support
In 6X & 200K		
Cherry-Plum		Emotional support
Clematis		Faintness
Impatiens		Neurological support
Rock Rose		Emotional support
Star-of-Bethlehem		Trauma support



Oxygenation

•Histamine



Regeneration

•Choline
•Histamine
•Lymph node
•Peyer's patches
•Impatiens
•Star-of-Bethlehem
•Cherry-Plum
•Rock Rose
•Clematis



Drainage & Detox

•Choline

Dosage:

1 - 5 spray(s), 1 - 3 time(s)/day

In crisis, 1 – 3 sprays every 15 minutes

Combinations:

Systemic Dx: to assist with stronger drainage

With any of the sensitivity formulas: F'ds for food sensitivities

P'ts for animal sensitivities; P'llen mixes; Environmental; single phenolics...

Sinister 7[©]

Indications for Use:

- It is a combination of the 7 most common allergy causing foods. This approach allows for the reduction of stresses the person has to deal with, therefore permits the practitioner to determine the true underlining cause(s) a client is faced with. Works best in conjunction with a rotational diet. From here, you will be lead to the most critical group to deal with. It makes food sensitivities a lot easier to deal with and resolve

Item# VPC0650

Formula

NDC: 63776-484-15

50 MI/1.7 oz bottle

20% Alcohol

Corn
Eggs
Milk
Soy (bean & tofu)
Sugar
Wheat
Yeast (brewer's and regular baking yeast)

All in 15X, 30-200K



Oxygenation



Regeneration



Drainage & Detox

- Corn
- Egg
- Milk
- Soy
- Sugar
- Wheat
- Yeast

Dosage:

1 - 5 spray(s), 1 - 3 time(s)/day

Copyright Viatrex 2021

Combinations:

Aller-Balance, Foods, G12, Sensitivity products
Systemic Detox, Enzymes +
Immune support

Str'ss[©]

Indications for Use:

- Suggested to help calm and relax
- Over work, overwhelmed
- Brain overload, work, study, multiple projects, juggling many things

Item# VPC0655

Formula

NDC: 63776-495-15

50 MI/1.7 oz bottle

20% Alcohol

Cobalt	12X	Adaptogen
Cuprum Metallicum	3X	Anti-spasmodic
Gelsemium	12X	Drainage, energy
Gingko	3X	Circulation support
Ginseng	3X	Adaptogen
Gotu Kola	3X	Support
Iodum	12X	Thyroid support
Lomatium	3X	Drainage
Vanadium	12X	Nutritional Support



Oxygenation

- Cobalt
- Cuprum Met
- Gingko
- Iodum



Regeneration

- Cobalt
- Cuprum Metallicum
- Gelsemium
- Gingko
- Ginseng
- Gotu Kola
- Iodum
- Vanadium



Drainage & Detox

- Gelsenium
- Gingko
- Lomatium
- Vanadium

Dosage:

1-5 spray(s), 1 - 3 time(s)/day

Copyright Viatrex 2021

Combinations:

Thyro, Intra-Cell, for energy support

Relief + to help calm more and reduce reactions

Systemic Detox or Mesenchyme to reduce toxic load

Systemic Dx[®]

Indications for Use:

- Organotherapy & Homeopathic preparation
- Full spectrum systemic drainage and detoxification
- Matrix & Lymphatic cleanse
- Kidney & Liver cleanse
- Thyroid cleanse
- Citric cycle & Cell rejuvenation & support
- Adrenal support & Chi/vitality preservation
- Immune support
- Blood cleanse & support

Item# VPC0665

NPN: 80052961

Formula

50 MI/1.7 oz bottle

20% Alcohol

Suprarenal gland	30K	Adrenal support
Alpha Ketoglutaric Acid	6X, 30K	Cell respiration
Alpha Lipoic Acid	6X, 30K	Anti-aging
Berberis	5X, 200K	Drainage
Carbo vegetabilis	30K	Drainage
Carduus Benedictus	30K	Drainage
Carduus Marianus	30K	Drainage
Colchicum Automnale	6C	Drainage
Galium Aparine	30K	Drainage
Kidney	6X, 200K	Regeneration
Liver	6X, 200K	Drainage
Lycopodium Clavatum	6X	Drainage
Lymph node	6X, 200K	Immune support
Mesenchyme	6X, 200K	Regeneration
Nux Vomica	7X, 200K	Drainage
Taraxacum Officinalis	6X, 200K	Drainage
Thymus	200K	Immune support
Thyroid	200K	Regeneration
Tonsil	6X, 200K	Regeneration



Oxygenation

- Suprarenal gland
- Alpha Ketoglutaric Acid
- Alpha Lipoic Acid



Regeneration

- Kidney
- Liver
- Lymph node
- Mesenchyme
- Suprarenal gland
- Thyroid
- Tonsil



Drainage & Detox

- Berberis
- Carbo vegetabilis
- Carduus Benedictus
- Carduus Marianus
- Colchicum Automnale
- Galium Aparine
- Kidney
- Liver
- Lycopodium Clavatum
- Tonsil
- Nux Vomica
- Taraxacum

Dosage:

1 - 5 spray(s), 1 - 3 time(s)/day

Copyright Viatrexx 2021

Combinations:

1st drainage & detox remedy

Background & adjunct remedy for all hormonal, immune, neurological organ, or sensitivity remedy



Systemic Detox/w[©]

New Alcohol Free
Same formula
Good for:
Nebulizing, children
& people with
challenges with
alcohol

Indications for Use:

- Full spectrum systemic drainage and detoxification
- Matrix & Lymphatic cleanse
- Kidney & Liver cleanse
- Thyroid cleanse (E-M fields, X-rays & radiation)
- Citric cycle & Cell rejuvenation & support
- Adrenal support & Chi/vitality preservation
- Immune support
- Blood cleanse & support

Item# VPC0665

NDC: 63776-501-15

Formula

50 MI/1.7 oz bottle

100% Water

Adrenal gland	30K	Adrenal support
Alpha Ketoglutaric Acid	6X, 30K	Cell respiration
Alpha Lipoic Acid	6X, 30K	Anti-aging
Ascorbic Acid	30K	Anti-oxidant
Berberis	5X, 200K	Drainage
Carbo vegetabilis	30K	Drainage
Carduus Benedictus	30K	Drainage
Carduus Marianus	30K	Drainage
Colchicum Automnale	6C	Drainage
Galium Aparine	30K	Drainage
IL-4	10X, 200K	Anti-inflammation
Kidney	6X, 200K	Regeneration
Liver	6X, 200K	Drainage
Lycopodium Clavatum	6X	Drainage
Lymph Node	6X, 200K	Immune support
Mesenchyme	6X, 200K	Regeneration
Nux Vomica	7X, 200K	Drainage
Taraxacum Officinalis	6X, 200K	Drainage
Thymus	200K	Immune support
Thyroid	200K	Regeneration
Tonsil	6X, 200K	Regeneration



Oxygenation

- Adrenal
- Alpha Ketoglutaric Acid
- Alpha Lipoic Acid
- Ascorbic Acid



Regeneration

- Adrenal
- IL-4
- Kidney
- Liver
- Lymph Node
- Thymus
- Thyroid
- Tonsil



Drainage & Detox

- Berberis
- Carbo vegetabilis
- Carduus Benedictus
- Carduus Marianus
- Colchicum Automnale
- Galium Aparine
- Kidney
- Liver
- Lycopodium Clavatum
- Lymph node
- Nux Vomica
- Taraxacum

Dosage:

1 - 5 spray(s), 1 - 3 time(s)/day

Copyright Viatrex 2021

Combinations:

1st drainage & detox remedy

Background & adjunct remedy for all hormonal, immune, neurological organ, or sensitivity remedy

Viatrex Bio Incorporated. www.Viatrex.com. T: 1-888-743-6652; F: 1-888-536-1294; Info@Viatrex.com.

These statements have not been evaluated by the Food & Drug Administration. This product is not intended to diagnose, treat, cure or prevent any disease.

Thyro[®]

Indications for Use:

- Organotherapy & homeopathic preparation
- Thyroid support, adaptogenic and nourishing
- Adrenal support
- Immune support

Item# VPC0680

NPN: 80057653

Formula

50 MI/1.7 Oz bottle

20% Alcohol

Adrenal gland	6X, 200K	Adrenal support
Fucus vesiculosus	3X, 200K	Drainage
Iodum	12X, 200K	Thyroid support
Parathyroid	6X, 200K	Regeneration
Pituitary gland	6X, 200K	Regeneration
Spleen	6X, 200K	Regeneration
Spongia tosta	3X, 200K	Drainage
Thymus	6X, 200K	Regeneration
Thyroid gland	6X, 200K	Regeneration



Oxygenation

- Pituitary gland
- Thymus



Regeneration

- Adrenal gland
- Iodium
- Parathyroid
- Pituitary gland
- Spleen
- Thymus
- Thyroid gland



Drainage & Detox

- Fucus Vesiculosus
- Spongia tosta
- Thyroid gland

Dosage:

1 - 5 spray(s), 1 - 3 time(s)/day

Copyright Viatrex 2021

Combinations:

Fem + & Male + to assist with hormonal support

One or a combination of the **Viatrex Sensitivity &/or System**

Drainage products for targeted **Drainage & Detox**.

Tone[©]

Indications for Use:

- Improve tone (saggy/weak skin, muscles, ligaments, joints)
- Sculpturing, lifting
- Repair and regeneration of soft tissue

Item# VPC0678

NDC: 63776-523-15

Formula

50 MI/1.7 oz bottle

20% Alcohol

Calc fluor	30K	Drainage
Centella asiatica	6X, 30K	Adaptogen
Cu	30K	Metabolism
Embryo	30K	Regeneration
Fumaric acid	30K	Cell respiration
Funiculus	200K	Regeneration
Graphites	30K	Drainage
Hamamelis	30K	Venous support
Kalium aspariticum	30K	Cell respiration
Muscle	6X, 200K	Regeneration
Nat oxall	30K	Cell respiration
Nat pyruvi	30K	Cell respiration
Placenta	30K	Regeneration
Plasma	30K	Regeneration
Quinhydrone	30K	Metabolism
Silicea	30K	Drainage
Succinic acid	30K	Cell respiration
Vitamin B5	30K	Metabolism
Zinc	30K	Neurological support



Oxygenation

- Cu
- Fumaric Ac
- Kali asp
- Nat Oxal
- Nat Pyruv
- Quinhydrone
- Succinic ac
- Zn



Regeneration

- Calc Fluor
- Cu
- Embryo
- Fumaric Ac
- Funiculus
- Graphites
- Hamamelis
- Kali asp
- Muscle
- Nat Ox
- Nat Pyruv
- Placenta
- Plasma
- Quinhydrone
- Silicea
- Succinic ac
- Vit B5
- Zinc



Drainage & Detox

- Calc Fluor
- Centella
- Graphites
- Hamamelis
- Silicea

Dosage:

1 - 5 spray(s), 1 - 3 time(s)/day

Combinations:

Toning/sculpturing: Prolo, Connectissue

Repair: Articula(joints), Connectissue &/or Prolo (soft tissue)

Drainage: Mesenchyme, Systemic Detox

Virus[©]

Indications for Use:

- Viral conditions
- Cold & Flu symptoms
- Immune support and enhancer

Item# VPC0750

Formula

NDC#: 63776-570-15

50 MI/1.7 oz bottle

20% Alcohol

Acidum phosphoricum	12X	Immune support
Belladonna	12X	Drainage
Echinacea	3X	Immune support
Eupatorium perfoliatum	12X	Drainage
Gelsemium	12X	Neurological support
Hydrastis	3X	Drainage
Iodium	12X	Thyroid support
Lachesis	12X	Anti-inflammation
Lycopodium	12X	Drainage
Nastrutium	3X	Drainage
Nux Vomica	12X	Drainage
Phosphorus	12X	Drainage
Pyrogenium	30X, 200K	Drainage
Selenium	12X	Nutritional Support
Spleen	6X	Regeneration
Thymus	6X	Immune support
Zinc	12X	Neurological support



Oxygenation

- Acid. Phosphoricum
- Iodium
- Selenium
- Zinc



Regeneration

- Belladonna
- Echinacea
- Gelsemium
- Hydrastis
- Iodium
- Lachesis
- Selenium
- Spleen
- Thymus
- Zinc



Drainage & Detox

- Belladonna
- Eupatorium perfoliatum
- Hydrastis
- Lycopodium
- Nastrutium
- Nux Vomica
- Phosphorus
- Pyrogenium

Dosage:

1-5 Spray(s), 1 - 3 time(s)/day

Copyright Viatrex 2021

Combinations:

Consider with **Immunexx**, may also be complemented with **Thyro**. Consider as extra support with **Systemic Detox** or **Parasites**.

Wrinkle[©]

Indications for Use:

- Wrinkles, scars, stretch marks, keloids
- Skin regeneration and growth
- Improve, strengthen & rebuild skin matrix and scaffolding

Item# VPC0770

NDC: 63776-575-15

Formula

50 MI/1.7 oz bottle

20% Alcohol

Collagen	8X, 200K	Regeneration
Connective tissue	200K	Regeneration
DNA	30K	Regeneration
Epithelial GF	200K	Regeneration
Gingko	30K	Circulation support
Glycosaminoglycans	30K	Metabolism
Hyaluronic acid	30K	Regeneration
Plasma	200K	Regeneration
RNA	30K	Regeneration
Silicea	30K	Drainage



Oxygenation

- DNA
- Gingko
- Glycosaminoglycans
- Plasma
- RNA



Regeneration

- Collagen
- Connective tissue
- DNA
- EGF
- Gingko
- Glycosaminoglycans
- Hyaluronic Acid
- Plasma
- RNA
- Silicea



Drainage & Detox

- Gingko
- Silicea

Dosage:

1 - 5 spray(s), 1 - 3 time(s)/day

May apply topically

Copyright Viatrex 2021

Combinations:

Extra support: Connectissue, Prolo, Collagen

Drainage/Blemishes: Mesenchyme, Derma, Adipose, Acne

Coloration: Pigmentation, Derma, Mesenchyme

ZzzZz[®]

Indications for Use:

- Organotherapy & homeopathic preparation
- To help support a restful sleep.
- Calming

Item# VPC0800

NPN: 80060920

Formula

50 ml/1.7 oz bottle

20% Alcohol

Avena sativa	30K	Calming
Chamomilla	30K	Calming
Helleborus niger	30K	Calming
Ignatia amara	30K	Calming
Melissa officinalis	30K	Calming
Phosphorus	30K	Drainage
Pineal gland	30X	Sleep control
Pulsatilla	30K	Calming
Valeriana officinalis	30K	Calming



Oxygenation



Regeneration

•Avena Sativa
•Chamomilla
•Helleborus niger
•Ignatia amara
•Melissa Off.
•Pineal gland
•Pulsatilla
•Valeriana Off.



Drainage & Detox

•Phosphorus



Dosage:

1-3 squirt(s), 1 - 3 time(s)/day

Copyright Viatrexx 2021

Combinations:

Relief + for a more sympathetic & calming disposition.

Ou-Ch may help to relax & ease tension. **Melatonin & Serotonin** singles for extra additional neurological support.

Acetaldehyde[©]

Indications for Use:

- Homeopathic medicine
- Spreading phenomenon of food sensitivities & Candida Albicans reactions
- Leaky gut
- General superficial respiratory problems
- Petrochemical & yeast sensitivities

Item# VP0001

DIN-HM: 80049056

Formula

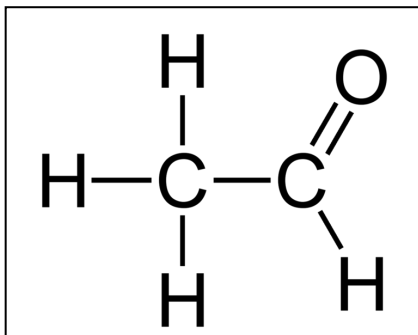
50 MI/1.7 oz bottle

20% Alcohol

Acetaldehyde

Immune support

6X, 200K



Oxygenation



•Acetaldehyde

Regeneration



•Acetaldehyde

Drainage & Detox

Dosage:

1 - 5 spray(s), 1 - 3 time(s)/day

1 spray every 15 minutes during crisis

Copyright Viatrexx 2021

Combinations:

Viatrexx Cand'da products

Systemic Dx for general drainage of system and to enhance healing

Viatrexx Relief & sensitivity specific products

AIL-1[©]

Indications for Use:

- Inflammation
- Auto-immune

Item# VP0002

Formula

NDC: 63776-611-15

50 MI/1.7 oz bottle

20% Alcohol

Anti-Interleukin 1

9X, 30K



Oxygenation

•Anti-
Interleukin 1



Regeneration

•Anti-
Interleukin 1



Drainage & Detox

Dosage:

1 - 5 spray(s), 1 - 3 time(s)/day

1 spray every 15 minutes during crisis

Copyright Viatrex 2021

Combinations:

Viatrex Pain & Sports Medicine products

Systemic Detox for general drainage of system and to enhance healing

BD[®]

Indications for Use:

- Organotherapy preparation
- Cognitive disorders
- Regulates neural plasticity
- Addictions
- Stress related & mood disorders
- Depression
- Mental functions (learning, memory, fatigue)
- Behavior, ADD, ADHD
- Brain aging, geriatrics

Item# VP0016
NPN: 80061039

Formula

50 MI/1.7 oz bottle
20% Alcohol

Hippocampus

6X, 30K



Oxygenation

•Hippocampus



Regeneration

•Hippocampus



Drainage & Detox

•Hippocampus

Dosage:

1 - 5 spray(s), 1 - 3 time(s)/day

Copyright Viatrex 2021

Combinations:

Systemic Dx: for general drainage of system and to enhance healing

Viatrex Neurological formulas for support

Choline Chloride[®]

Indications for Use:

- Homeopathic medicine
- Neurological support
- Memory loss
- Mental clarity, foggy brain symptoms
- Brain allergies

Item# VP0010

DIN-HM: 80049044

Formula

50 MI/1.7 Oz bottle

20% Alcohol

Choline Chloride

Neurological support 12C, 200K



Oxygenation



Regeneration

• Choline
chloride



Drainage & Detox

• Choline
Chloride

Dosage:

1 - 5 spray(s), 1 - 3 time(s)/day

1 spray every 15 minutes during crisis

Copyright Viatrex 2021

Combinations:

Viatrex Neurological products

Systemic Dx for general drainage of system and to enhance healing

Viatrex Relief & sensitivity specific products



Collagen[©]

Indications for Use:

- Organotherapy preparation
- Anti-aging
- Skin, muscle, tissue regeneration
- Scars
- Deep wrinkle
- Alopecia

Item# VPC0085
NPN: 80049040

Formula

Collagen

50 MI/1.7 oz bottle
20% Alcohol
8X, 200K



Oxygenation



Regeneration

• Collagen



Drainage & Detox

Dosage:

1 - 5 spray(s), 1 - 3 time(s)/day

Spray on skin and pass micro skin roller

Copyright Viatrexx 2021

Combinations:

Systemic Dx: for general drainage of system and to enhance regeneration

Viatrexx Aesthetic & Sport formulas for support

Viatrexx. www.Viatrexx.ca . T: 1-888-337-8427; F: 1-888-536-1294; Info@Viatrexx.ca.

These statements have not been evaluated by the Government Authorities. This product is not intended to diagnose, treat, cure or prevent any disease.

Coumarin[®]

Indications for Use:

- Homeopathic medicine
- Pains (neck, back, intestinal)
- Hay fever and grass allergies
- Asthma (allergy or sensitivity induced)

Item# VP0050

DIN-HM: 80049218

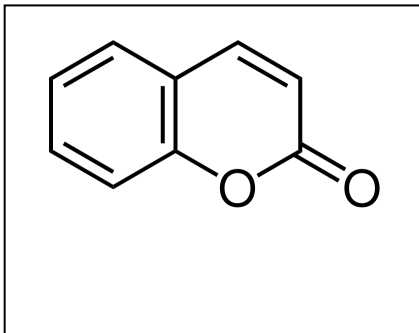
Formula

50 MI/1.7 oz bottle

20% Alcohol

Coumarin

Drainage 6X, 200K



Oxygenation



Regeneration

• Coumarin



Drainage & Detox

• Coumarin

Dosage:

1 - 5 spray(s), 1 - 3 time(s)/day

1 spray every 15 minutes during crisis

Copyright Viatrexx 2021

Combinations:

Viatrexx Pain products

Systemic Dx for general drainage of system and to enhance healing

Viatrexx Relief & sensitivity specific products

DH-enal[®]

Indications for Use:

- Organotherapy preparation
- Low sex drive & energy
- Immune & endocrine support
- Anti-aging

Item# VP0055
NPN: 80061018

Formula

50 MI/1.7 oz bottle
20% Alcohol

Adrenal gland

6X, 200K



Oxygenation



Regeneration

- Adrenal gland



Drainage & Detox

Dosage:

1 - 5 spray(s), 1 - 3 time(s)/day

Copyright Viatrex 2021

Combinations:

Viatrex Male+ and other endocrine products

Systemic Dx: for general drainage of system and to enhance healing

Dopa[®]

Indications for Use:

- Homeopathic medicine
- Depression
- Loss of motor function & coordination challenges
- Memory loss and emotional stability
- Hypothalamic & Pituitary axis function
- Motivation, reward, pleasure & addiction implications

Item# VP0060

DIN-HM: 80049038

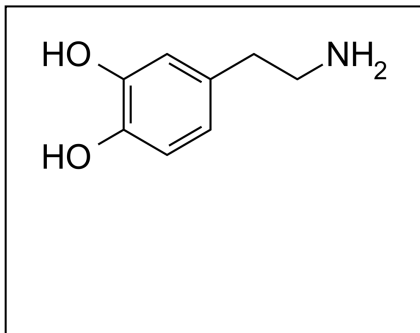
Formula

50 MI/1.7 oz bottle

20% Alcohol

Dopa

Neurological Support 12C, 200K



Oxygenation



Regeneration

• Dopa



Drainage & Detox

Dosage:

1 - 5 spray(s), 1 - 3 time(s)/day

Copyright Viatrex 2021

Combinations:

Viatrex Neurological products

Systemic Dx for general drainage of system and to enhance healing

GABA[®]

Indications for Use:

- Hypertension & irritability
- Depression
- Mental sluggishness
- Sympathetic nervous system challenges
- Allergies
- Headaches

Item# VP0070

NDC: 63776-690-15

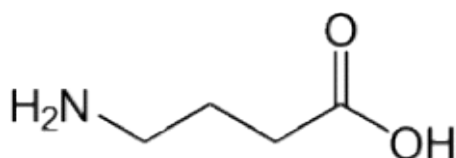
Formula

50 MI/1.7 oz bottle

20% Alcohol

Gamma-Amino Butyric Acid

6X, 200K Neurological support



Oxygenation



Regeneration

• GABA



Drainage & Detox

Dosage:

1 - 5 spray(s), 1 - 3 time(s)/day

Copyright Viatrex 2021

Combinations:

Relief & Immune products to assist with neurological functions
Systemic Detox for general drainage of system and to enhance healing

Gallic Acid[®]

Indications for Use:

- Homeopathic medicine
- ADD, ADHA
- Asthma
- Constipation
- Hemophilia
- Kidney pain
- Pollen allergies
- TB

Item# VP0080

DIN-HM: 80049041

Formula

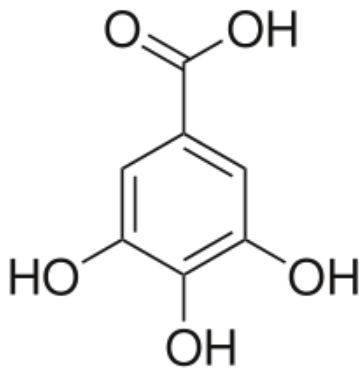
50 MI/.7 oz bottle

20% Alcohol

Gallic Acid

6X, 200K

Sensitivity relief



Oxygenation



Regeneration

• Gallic Acid



Drainage & Detox

Dosage:

1 - 5 spray(s), 1 - 3 time(s)/day

Copyright Viatrexx 2021

Combinations:

Relief & Immune products to assist with neurological functions
Systemic Dx for general drainage of system and to enhance healing



Growth Hormone[©]

Indications for Use:

- Anti-aging
- Vitality and energy
- Hormonal support
- Muscle and structural growth support

Item# VP0085

Formula

Growth Hormone

NDC: 63776-700-15

50 MI/1.7 oz bottle

20% Alcohol

6X, 200K Hormonal support



Oxygenation



Regeneration

• Growth Hormone



Drainage & Detox

Dosage:

1 - 5 spray(s), 1 - 3 time(s)/day

Copyright Viatrex 2021

Combinations:

Relief & Immune products to assist with neurological functions

Endocrine products for specific sex

Systemic Detox for general drainage of system and to enhance healing

Viatrex Bio Incorporated. www.Viatrex.com. T: 1-888-743-6652; F: 1-888-536-1294; Info@Viatrex.com.

These statements have not been evaluated by the Food & Drug Administration. This product is not intended to diagnose, treat, cure or prevent any disease.

Histamine[©]

Indications for Use:

- Homeopathic medicine
- Ig support
- Allergies
- Skin issues
- Bronchial issues

Item# VP0090

DIN-HM: 80049043

Formula

50 MI/1.7 oz bottle

20% Alcohol

Histamine dihydrochloride

6X, 200K

Ig support



Oxygenation



Regeneration

•Histamine
dihydrochloride



Drainage & Detox

Dosage:

1 - 5 spray(s), 1 - 3 time(s)/day

Copyright Viatrex 2021

Combinations:

Relief & Immune products to assist with neurological functions

Allergy products for specific allergen

Systemic Dx for general drainage of system and to enhance healing

IL-10[©]

Indications for Use:

- Attenuates all types of inflammation

Item# VP1010

Formula

NDC: 63776-710-15

50 MI/1.7 oz bottle

20% Alcohol

Interleukin 10

12X, 200K



Oxygenation

•Interleukin
10



Regeneration

•Interleukin
10



Drainage & Detox

•Interleukin
10

Dosage:

1 - 5 spray(s), 1 - 3 time(s)/day

Copyright Viatrex 2021

Combinations:

Viatrex Immune & Sports products

Systemic Detox for general drainage of system and to enhance healing

Mannan[®]

Indications for Use:

- Candida & fungal issues
- Hives & rashes from foods, candida or fungal
- Insulin resistance symptoms

Item# VP0120

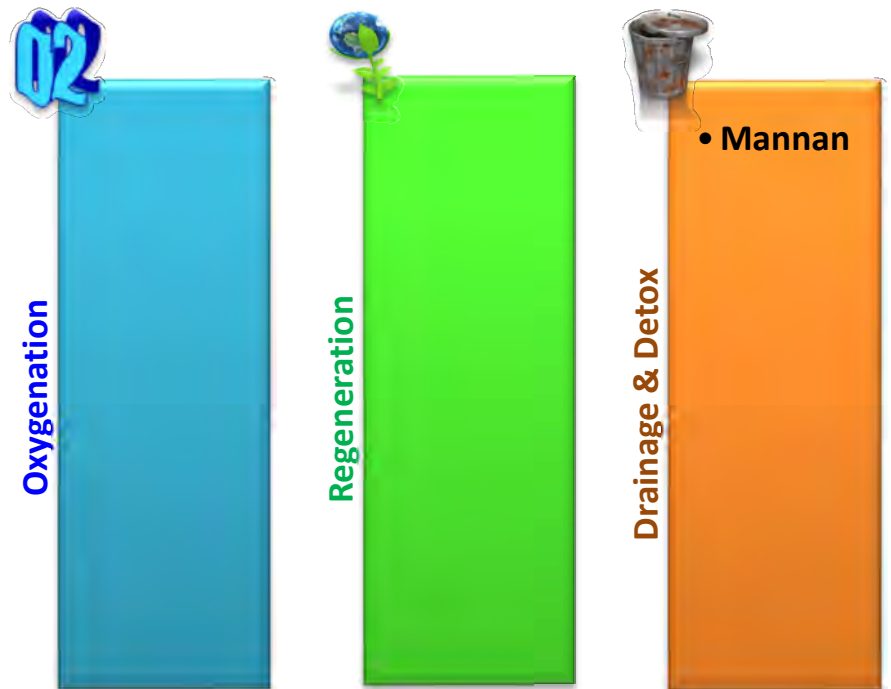
NDC: 63776-775-15

Formula

50 MI/1.7 oz bottle

Mannan

6X, 200K Drainage



Dosage:

1 - 5 spray(s), 1 - 3 time(s)/day

Copyright Viatrex 2021

Combinations:

Candida & Fungal products to assist with neurological functions

Allergy products for specific allergen

Systemic Detox for general drainage of system and to enhance healing

Melatonin[®]

Indications for Use:

- Insomnia
- Weight gain
- Mood swings

Item# VP0125

NDC: 63776-780-15

Formula

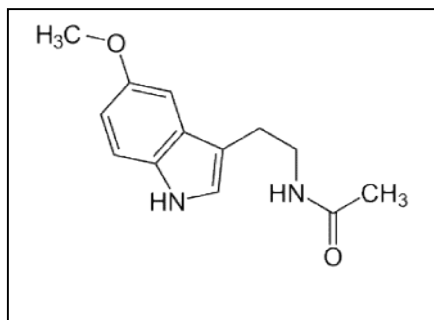
50 MI/1.7 oz bottle

20% Alcohol

Melatonin

6X, 200K

Neurological support



Oxygenation



Regeneration

• Melatonin



Drainage & Detox

Dosage:

1 - 5 spray(s), 1 - 3 time(s)/day

Copyright Viatrex 2021

Combinations:

Relief & Neuro products to assist with neurological functions

Allergy products for specific allergen

Systemic Detox for general drainage of system and to enhance healing

Pregnenolone[©]

Indications for Use:

- Synaptic function balance
- Impaired memory and cognitive function
- Neuro-steroid
- Progesterone & DHEA precursor

Item# VP0143

NDC: 63776-822-15

Formula

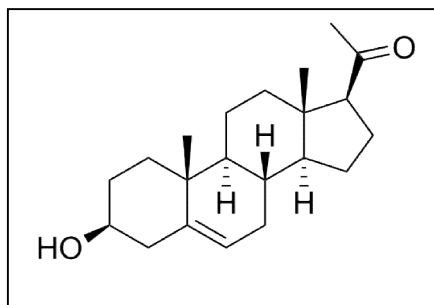
50 MI/1.7 oz bottle

20% Alcohol

Pregnenolone

6X, 200K

Neuro-Hormonal support



02

Oxygenation



•Pregnenolone

Regeneration



Drainage & Detox

Dosage:

1 - 5 spray(s), 1 - 3 time(s)/day

Copyright Viatrex 2021

Combinations:

Neuro products to assist with neurological functions

Endocrine products to assist with hormonal functions.

Systemic Detox for general drainage of system and to enhance healing

Quercetin[®]

Indications for Use:

- Homeopathic preparation
- Sensitivities to foods, pollens & air borne allergens
- Broken capillaries
- Sleepy after meals with wheat

Item# VP0150
NPN: 80053154

Formula

50 MI/1.7 oz bottle
20% Alcohol

Avena sativa

6X, 200K Drainage



Oxygenation



Regeneration

- Avena sativa



Drainage & Detox

- Avena sativa

Dosage:

1 - 5 spray(s), 1 - 3 time(s)/day

Copyright Viatrex 2021

Combinations:

Relief products to assist with sensitivities and reactions

Allergy products to address specific culprit.

Systemic Dx for general drainage of system and to enhance healing

Rutin[©]

Indications for Use:

- Sensitivities to grains, pollens & air borne allergens
- Easy bruising
- Itchiness

Item# VP0152

NDC: 63776-840-15

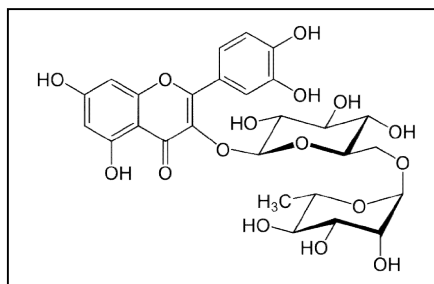
Formula

50 ml/1.7oz bottle

20% Alcohol

Rutin

6X, 200K Drainage



02

Oxygenation



Regeneration

• Rutin



Drainage & Detox

• Rutin

Dosage:

1 - 5 spray(s), 1 - 3 time(s)/day

Copyright Viatrex 2021

Combinations:

Relief products to assist with sensitivities and reactions

Allergy products to address specific culprit.

Systemic Detox for general drainage of system and to enhance healing

Serotonin[®]

Indications for Use:

- Mood swings
- Sensitivity induced malaise or un-well feeling
- Stress
- Mental confusion

Item# VP0154

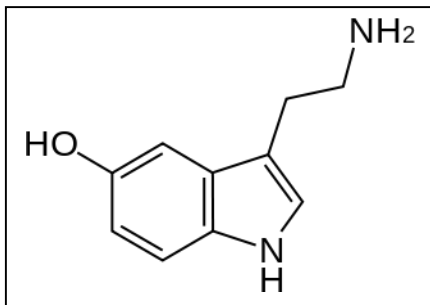
NDC: 63776-850-15

Formula

50 MI/1.7 oz bottle

20% Alcohol

Serotonin 6X, 200K Neurological balance



Oxygenation



Regeneration

• Serotonin



Drainage & Detox

Dosage:

1 - 5 spray(s), 1 - 3 time(s)/day

Copyright Viatrex 2021

Combinations:

Relief products to assist with sensitivities and reactions

Allergy products to address specific culprit.

Systemic Detox for general drainage of system and to enhance healing

TGF-beta[©]

Indications for Use:

- Anti-aging, repair & regeneration
- Inflammatory issues
- Auto-immune disorders
- Cell communication & tissue development
- Increases protein excretion

Item# VP0164

NDC: 63776-860-14

Formula

30 MI/1 Oz bottle

20% Alcohol

Transforming Growth Factor Beta
5C, 200K

Regeneration



Oxygenation

• TGF-b



Regeneration

• TGF-b



Drainage & Detox

• TGF-b

Dosage:

1 - 5 spray(s), 1 - 3 time(s)/day

Copyright Viatrex 2021

Combinations:

Systemic Detox for general drainage of system and to enhance regeneration

Viatrex Sport medicine products

Viatrex Relief series for additional inflammatory support

Viatrexx Aesthetic options

Email: Info@viatrexx.com, website : www.viatrexx.com, T: 1-888-337-8427

Viatrexx views Aesthetics from a causal perspective and looks to resolve the underlining issues so the body may perform at its optimun and radiate at its full potential. It is recommended you review the aesthetic booklet available on the viatrexx professional section of the website for more detailed information and protocol suggestions.

Standard protocol:

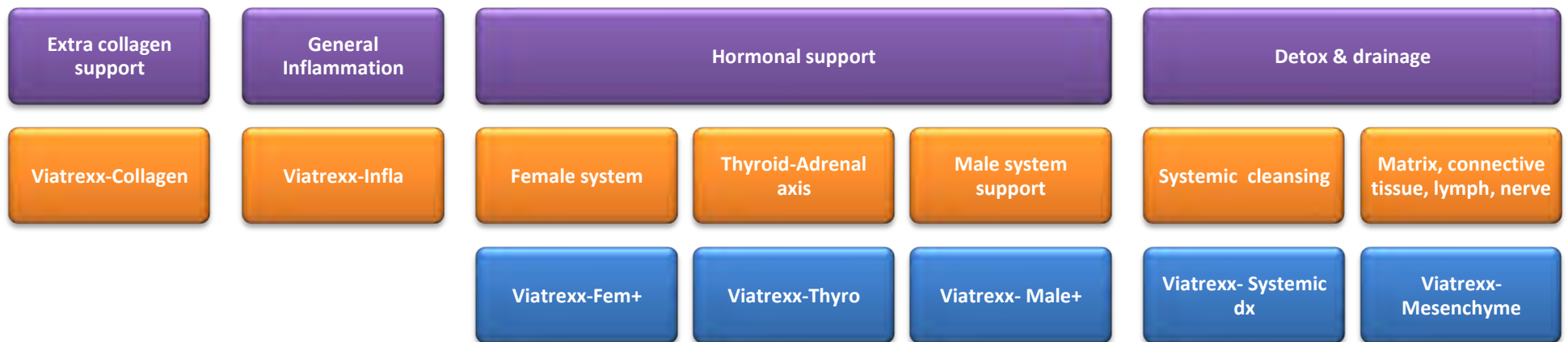
Each remedy is 4 squirts 3 times a day, may take together or add to water. May spray over desired area and use roller.

For injections or Via-derm

1X/ week for 4 weeks, 1X/ every 2 weeks for 2 sessions, then 2 sessions a month apart, then re-evaluate. Take oral products throughout. Repeat 2 to 3 times per year.



Options to enhance Aesthetic results, Hormonal & drainage products are the most used additions to the above aesthetic specific products.



To avoid or address bruising add **Viatrexx-OuCH** & **Viatrexx-Mesenchyme** to your mix.

Viatrexx Biological & Parasitic options

Email: Info@viatrexx.com, website : www.viatrexx.com, T: 1-888-337-8427

Candida, parasites and other biological challenges can impair the body and its ability to grab the nutrition from what we eat.

It is recommended you review the information available on the viatrexx professional section of the website for more details and protocol suggestions.

Standard protocol:

Each remedy is 4 squirts 3 times a day, may take together or add to water. May spray over desired area and use roller.

Usual protocol last 3 months. Adjustments, additions and changes to remedy selection may be done after 2months.

Most common protocol is the following combination: **Viatrexx-P'sites**, **Viatrexx-Candida+** and **Viatrexx-Systemic Dx** for 3 months.

(After 2 months replace **Viatrexx-Systemic** with **Viatrexx-GI**, maintain **Viatrexx-GI** for 2 -3 months, evaluate if **Viatrexx-Candida+** and/or **Viatrexx-P'sites** need to be continued.)

Irritability, cravings, moodiness and other cleansing and withdrawl symptoms may result from the process



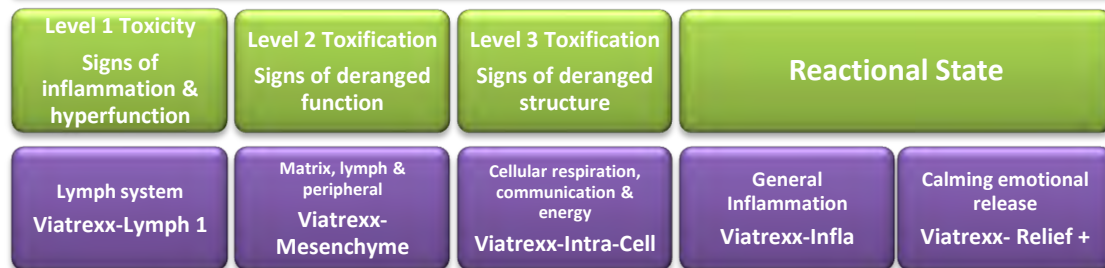
If energy gets low consider **Viatrexx-Intra Cell** and gender specific Viatrexx product.

Viatrexx Detox & Drainage options

Email: Info@viatrexx.com, website : www.viatrexx.com, T: 1-888-337-8427

Viatrexx-Systemic Dx
{Master drainage & detox for entire body, may replace kits of multiple products, toxicity & organ specific remedies.}

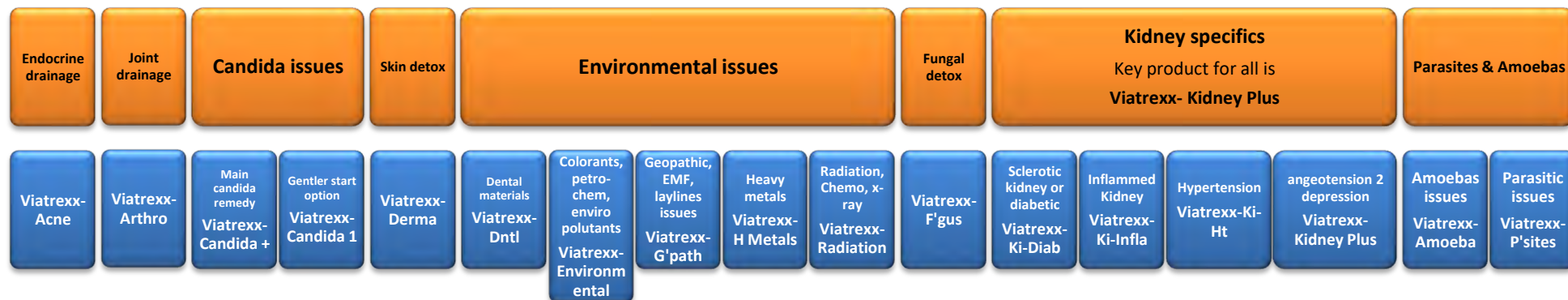
Traditional method



Organ Specific



Targeted options



The **Viatrexx** system was designed to be as simple as using **Viatrexx-Systemic Dx** & regulating the dosage from a squirt per night to 10 squirts 4 X a day for 1 to 3 months. To be specific add a targeted option listed below.

If **Viatrexx-Systemic** is too strong, start with **Viatrexx-Mesenchyme** for 1 month, then introduce **Viatrexx-Systemic Dx**.

Standard protocol:

Each remedy is 4 squirts 3 times a day, may take together or add to water.

Step 1 (slower approach, for 2 weeks to 1 month, then move on to step 2)

Choose the toxic level remedy(ies)

Ex: **Viatrexx-Mesenchyme** & **Viatrexx-Infla** (if they are emotional or feel overwhelmed use **Viatrexx-Relief +** rather than **Viatrexx-Infla**).

Step 2 (most practitioners start here, for 1 – 3 months)

To toxicity level remedy(ies), add organ specific remedy, may include Targeted remedy.

Ex: **Viatrexx-Mesenchyme**, **Viatrexx-Infla** & **Viatrexx-Lvr** or **Viatrexx-Systemic**

Step 3 (add to step 2 between 2 weeks or 1 month)

May add additional organ specific &/or targeted remedy (ies).

Ex: **Viatrexx-Mesenchyme**, **Viatrexx-Infla**, **Viatrexx-Lvr** + **Viatrexx-Derma**

May reduce the number of remedies by replacing toxicity level remedies like **Viatrexx-Mesenchyme** & all organ remedies like **Viatrexx-Lvr** with **Viatrexx-Systemic**.

Hence protocol would be: **Viatrexx-Systemic** + **Viatrexx-Derma**.

If emotional, maintain **Viatrexx-Relief+**.

You can mix and match all the remedies.

Viatrexx Emotional options

Email: Info@viatrexx.com, website : www.viatrexx.com, T: 1-888-337-8427

Most of the Viatrexx products have an emotional component. Part of our view is; if an emotion may be harbored in an organ or gland (TCM), then whatever metabolic factors (messenger molecules) it produces may be colored with that emotion, thereby distributing that emotion throughout the cells and network. If this premise is correct then these molecules negative imprints need to be addressed, hence our multi-tiered dilutions of these molecules within our formulas.

The 2 most powerful products are Viatrexx-Systemic Dx and Viatrexx-MuSkel.

Viatrexx-Systemic dx; as it cleans out the organs & glands, it works its way down to any emotions the system(s) may host. Events/incidents of a similar theme may start to come up and remembering the individuals involved. The person starts to process and with proper counselling can regain their self worth, respect and dignity.

Viatrexx-MuSkel was created to deal with concussions, accidents and trauma injuries. Parts of the limbic system and solar plexus are included in the complex. Both neurological segments deal with emotional memory and harboring. The goal was to help release the emotions associated to an accident so the person could release any crippling memory associated to it. Viatrexx-MuSkel has been reported to release memories from far back in the person's psyche.

Viatrexx-Relief + is designed to soften the emotional impact of a healing crisis or emotional release, so it becomes more manageable.

Ensure you are or have someone experience in emotional counselling when using these products.

Standard protocol:

Each remedy is 4 squirts 3 times a day, may take together or add to water. May spray over desired area and use roller.

If emotional release is strong, consider limiting protocol to 4 squirts before sleep. Let the dreams help with the work. A Diary or Journal is often recommended during this period.

For scar de-activation, the product is injected or introduced directly into the scar (Via-Derm). Strong emotional reactions may occur. Think of it like releasing a horcrux in Harry Potter. ☺

Key Emotional options

Emotional link to incident,
harboured emotions

Emotional link to incident

Calming, soothing, able to cope

Self worth, regaining one's rightful
respect, organ & gland emotional
release

Viatrexx- MuSkel

Viatrexx-OuCH

Viatrexx-Relief +

Viatrexx-Systemic

Consider adding gender specific or neurological support Viatrexx product(s) if the case warrants support in those areas.

Viatrexx Endocrine options

Email: Info@viatrexx.com, website : www.viatrexx.com, T: 1-888-337-8427

Endocrine protocols are based on dealing with the symptoms, balancing the endocrine system and cleaning out the system (including any emotional causal factor).

Standard protocol:

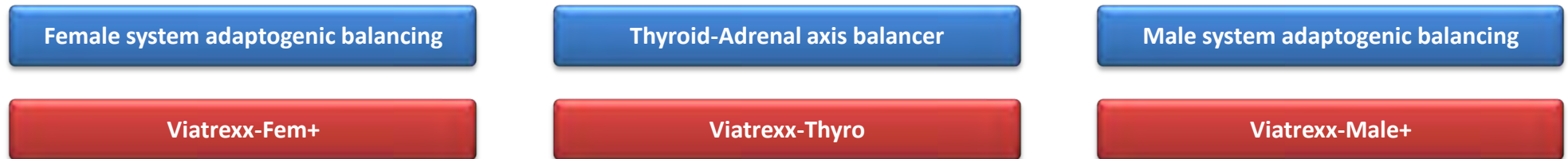
Each remedy is 4 squirts 3 times a day, may take together or add to water.

2-3 months, then re-evaluate

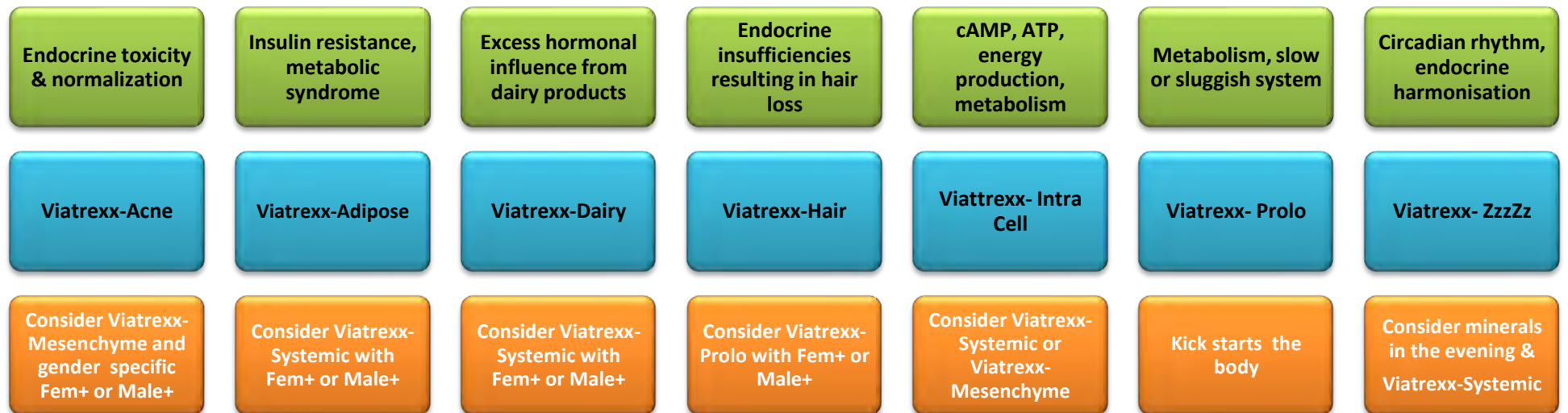
Start with gender specific product either **Viatrexx- Fem+** or **Viatrexx- Male+**

Qualify if they need thyroid-adrenal support, if so add **Viatrexx-Thyro**

Viatrexx- Intra Cell may be exchanged or alternated with **Viatrexx-Thyro** if the main energy deficiency is adrenal or Krebs



Options for endocrine related conditions, may be used on their own or combine with a primary endocrine, aesthetic &/or detox product



*To use the Viatrexx single phenolics (low dose endocrine), or protocols for very sensitive patients, please consult with our office. Thank you

These statements have not been evaluated by any government agency. These products are not intended to diagnosis, mitigate, treat, cure or prevent any disease.

Viatrexx Immune options

Email: Info@viatrexx.com, website : www.viatrexx.com, T: 1-888-337-8427

The core Immune product is **Viatrexx-Immunexx**, it mimics the immune system, supports it and nourishes it. **Viatrexx-Immunexx is the premier product for all immune issues.**

During times of cold & flu add **Viatrexx-Systemic dx** to help keep the elimination organs working, (it has Tonsil tissue which complements **Immunexx**).

Combined with mineral salts or mg in the evening and most people pull out of the cold & flu challenges within 24 hrs.

Viatrexx-Aller Balance is added if the challenges have moved to the respiratory system.

Standard protocol:

Each remedy is 4 squirts 3 times a day, may take together or add to water.

Viatrexx-Immunexx may go to 10 squirts, 10 times a day when there is a cold or flu challenge.

Usual scheduling is 2-3 months on the product(s), then re-evaluate

Viatrexx-Systemic is the most common complement to the immune products, followed by **Viatrexx-Mesenchyme** and **Viatrexx-Infla**.

Viatrexx- Immunexx

Respiratory, head

Auto Immune
balancing

General
inflammation

Drainage & Detox
with Immune
support

Gut

Viatrexx-Aller Balance

Viatrexx-Arthro

Viatrexx- Infla

Viatrexx- Systemic Dx

Viatrexx- Viatrexx- GI

Viatrexx- Relief 3-G12

Please refer to the product data sheet or contact Viatrexx for info on how to use the various immune products

Singles

Viatrexx-AIL 1

Viatrexx- IGF

Viatrexx- IL-10

Viatrexx- Peyer's Patches

Viarexx- TGFb

*To use the Viatrexx singles, please consult with our office. Thank you

These statements have not been evaluated by any government agency. These products are not intended to diagnosis, mitigate, treat, cure or prevent any disease.

Viatrexx Kidney options

Email: Info@viatrexx.com, website : www.viatrexx.com, T: 1-888-337-8427

The most powerful product is are Viatrexx-Kidney Plus

The Kidney is a central and unforgiving organ with little warning. Unlike other organs, damage to the kidney is nearly always permanent. It is the base of the triple warmer and influences memory, thinking, mood, energy, well being, cardio, digestion and other key functions.

On the professional side of the Viatrexx.com website, you will find more detailed information and guidance.

Within the professional information, with Dr Quinn Rivet ND, a naturopathic nephrology approach is outlined.

Standard protocol:

Each remedy is 4 squirts 3 times a day, may take together or add to water. May spray over desired area and use roller.

Viatrexx-Kidney Plus can be used in all the options below

General Drainage &
Detox

Sclerotic
Diabetic
Kidney

Inflamed
Kidney,
IgA issues

General
Inflammation

Hypertension,
Cardiovascular

Water
retention

Energy
support

Improve digestion,
reduce urea/creatinine
load

Toxic Ki Considerations

Viatrexx-
Ki-UBI

Viatrexx-
Systemic

Viatrexx-
Ki - Diab

Viatrexx-
Ki-Infla

Viatrexx-
Infla

Viatrexx-
Ki-Ht

Viatrexx-
Cellulite

Viatrexx-
Intra Cell

Viatrexx-
GI

Viatrexx-
Enzyme+

Viatrexx-
D'ntl

Viatrexx-
H Metals

Viatrexx-
Radiation

Consider adding gender specific or neurological support Viatrexx product(s) if the case warrants support in those areas.

These statements have not been evaluated by any government agency. These products are not intended to diagnosis, mitigate, treat, cure or prevent any disease.

Viatrexx Metabolism options

Email: Info@viatrexx.com, website : www.viatrexx.com, T: 1-888-337-8427

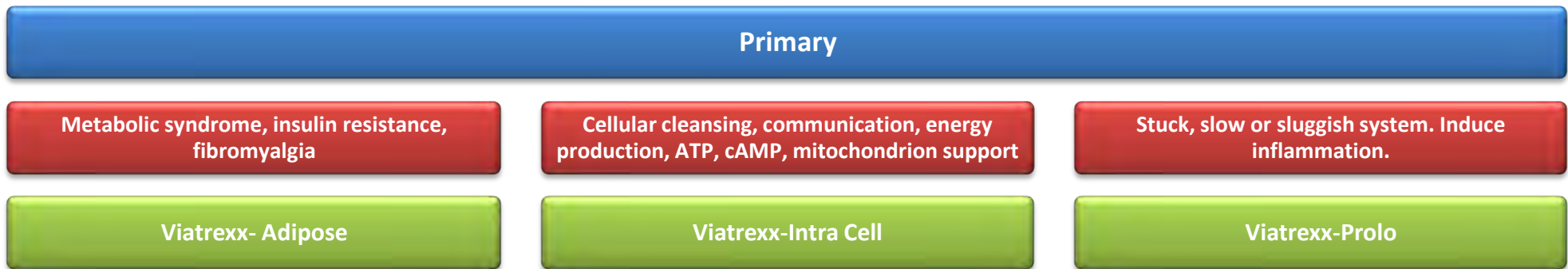
For the purpose of this grouping, Viatrexx views metabolism as those functions which address energy production, helping to increased metabolism (including digestion), O2 intake improvement, inflammation, endocrine balancing, & stress management.

It is recommended you review the information available on the Viatrexx professional section of the website for more details and protocol suggestions.

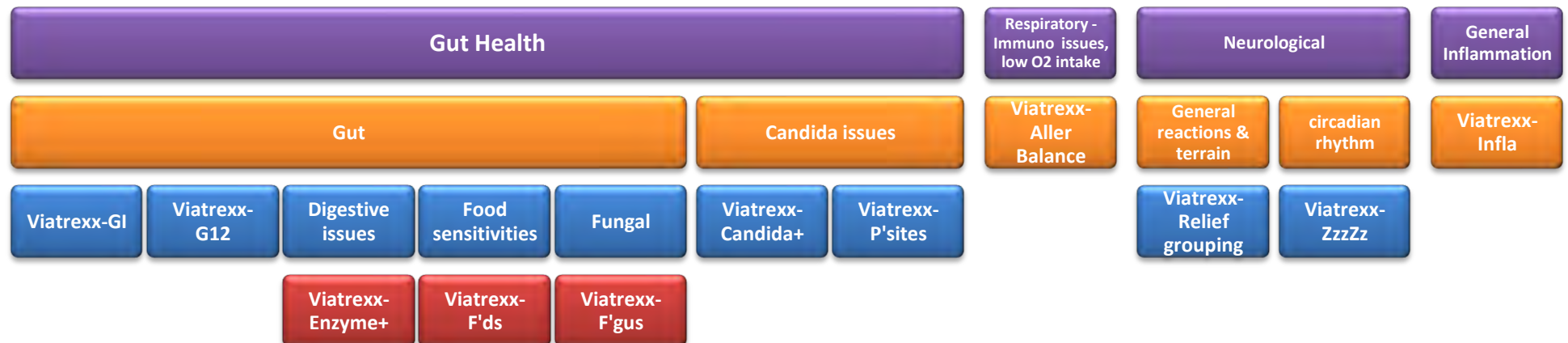
Standard protocol:

Each remedy is 4 squirts 3 times a day, may take together or add to water. May spray over desired area and use roller.

Viatrexx-Intra Cell may keep a person up, if this is the case, please limit dosing to morning and noon, nothing after 3 pm.



In the initial stage, detox/drainage products are often matched with Metabolic products, then hormonal &/or regenerative ones like **Viatrexx-Connectissue**, **Viatrexx-Articula** or similar are introduced.



Viatrexx Neurological options

Email: Info@viatrexx.com, website : www.viatrexx.com, T: 1-888-337-8427

“Primary Neurotransmitter” formulas focus on molecules for the respective pathways (the cars), “Structural Network” formulas offer nerve & brain regenerating complexes (the roads). Often a mix of a neurotransmitter formula (cars) with a structural one (roads) yields the best results. Viatrexx-Mesenchyme is the primary drainage product to clear the neurological pathways for effective flow, repair and regeneration. Viatrexx-Intra Cell then helps sparks cellular communication.

Standard protocol:

Each remedy is 4 squirts 3 times a day, may take together or add to water.

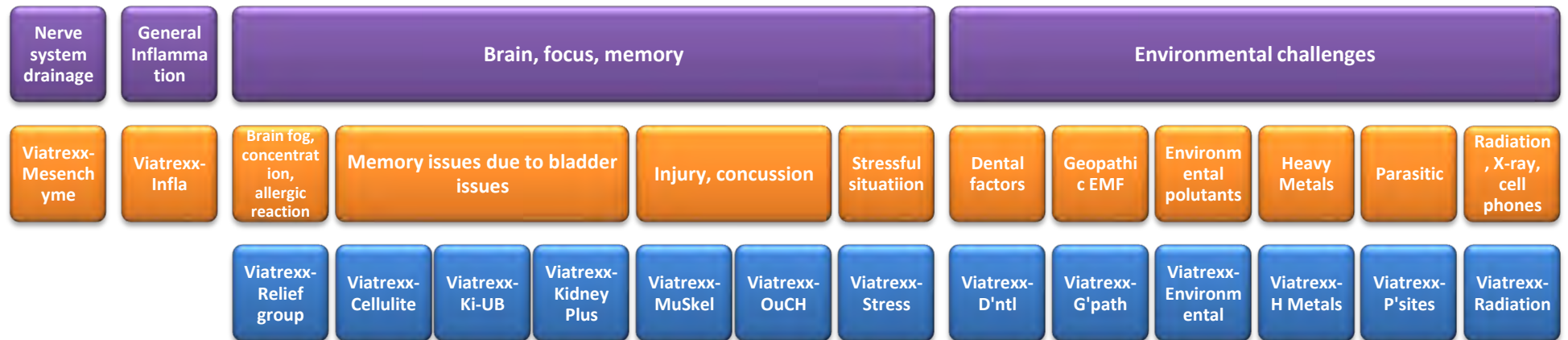
2-3 months, then re-evaluate

Broadest spectrum combo is **Viatrexx- MuSkel** with **Viatrexx- Neuro 3**

Consider using **Viatrexx- Mesenchyme** for the first 2 months.



Options for neurological related conditions, may be used on their own or combined with a primary neurological, sensitivity &/or detox product



*To use the Viatrexx single phenolics (low dose endocrine), or protocols for very sensitive patients, please consult with our office. Thank you

These statements have not been evaluated by any government agency. These products are not intended to diagnosis, mitigate, treat, cure or prevent any disease.

Viatrexx Pain Injury Sport options

Email: Info@viatrexx.com, website : www.viatrexx.com, T: 1-888-337-8427

For the Pain/Injury/Sport category the product are in 2 key groups: **Body/Tissue type part** and **Type of Pain**, plus **pro & anti inflammation** products. The easiest way to figure out what to use is:

1 - determine the type of tissue: Joints (**Viatrexx-Articula**), Soft Tissue (**Viatrexx-Connectissue**), Bones (**Viatrexx-Osteo**) &/or Nerves (**Viatrexx-MuSkel**).

2 - determine if there is a potential for bruising, injections, surgery (**Viatrexx-Ou-CH**), if there is bruising or a potential add **Viatrexx-Mesenchyme** to drain the area, is it a phantom pain or one which lingers (**Viatrexx-ItHurts**), if you want to bring down inflammation add **Viatrexx- Infla**, if you want to introduce inflammation then **Viatrexx-Prolo**.

Example; sprained ankle with ligament damage: **Viatrexx-Articula + Viatrexx-Connectissue + Viatrexx-Infla**

Same ankle with bruising: as above with **Viatrexx-Ou-CH + Viatrexx-Mesenchyme**.

Use the **Viatrexx-Osteo cream** for pain, inflammation, pre+post operation or injection, bruising, repair and regeneration.

Standard protocol:

Each remedy is 4 squirts 3 times a day, may take together or add to water.

2-3 months, then re-evaluate

Most common combo is: **Viatrexx-Connectissue + Viatrexx-Articula+ Viatrexx- MuSkel + Viatrexx-Infla**

Consider using **Viatrexx-OuCH +Viatrexx- Mesenchyme** for all cuts, bruising, pre & post operations/injections, swelling.

Primary Tissue type Formulas				Primary Pain Type Formulas			
Articulations, Discs, Joints	Soft Tissue, Muscles, Ligaments, Skin	Brain, Nerves, soft tissue, bone	Bones	Brain plasticity, nerve pain & regeneration, trauma	Nerve regeneration	Pre/post operation, bruising, cuts, trauma	Phantom or unspecific pain
Viatrexx- Articula	Viatrexx- Connectissue	Viatrexx- MuSkel	Viatrexx- Osteo	Viatrexx- MuSkel	Viatrexx- Prolo-Neural	Viatrexx-OuCH	Viatrexx- ItHurts

Options for pain & injury related conditions, may be used on their own or combined with a other product

Connective tissue drainage	Decrease Inflammation		Increase Inflammation	Brain, focus, memory, concussion, emotional trauma from injury		Protein absorbtion, balance	increase respiratory capacity	Auto immune
Viatrexx- Mesenchyme	Viatrexx-Infla	Viatrexx- AIL-1	Viatrexx-Prolo	Viatrexx- MuSkel	Viatrexx- Ou-CH pre & post op	Viatrexx- Enzyme +	Viatrexx- Aller Balance	Viatrexx- Arthro

*To use the Viatrexx singles like IL-10, AIL-1, BDNF or PRP, Prolo, Neural, Peri, Meso protocols, please consult with our office. Thank you

Viatrexx Allergy & Sensitivity options

Email: Info@viatrexx.com, website : www.viatrexx.com, T: 1-888-337-8427

Sensitivities protocols are based on dealing with the symptoms, balancing the terrain (TH1-TH2), addressing the allergen, and cleaning out the system (including any emotional causal factor).

Standard protocol:

Each remedy is 4 squirts 3 times a day, may take together or add to water.

Step 1 (slower approach, for 2 weeks to 1 month, then move on to step 2)

Combine **Viatrexx-Aller Balance** with your choice of either detox **Viatrexx-Mesenchyme** or **Viatrexx-Systemic** (this is the stronger one & has a deeper effect on emotions.)

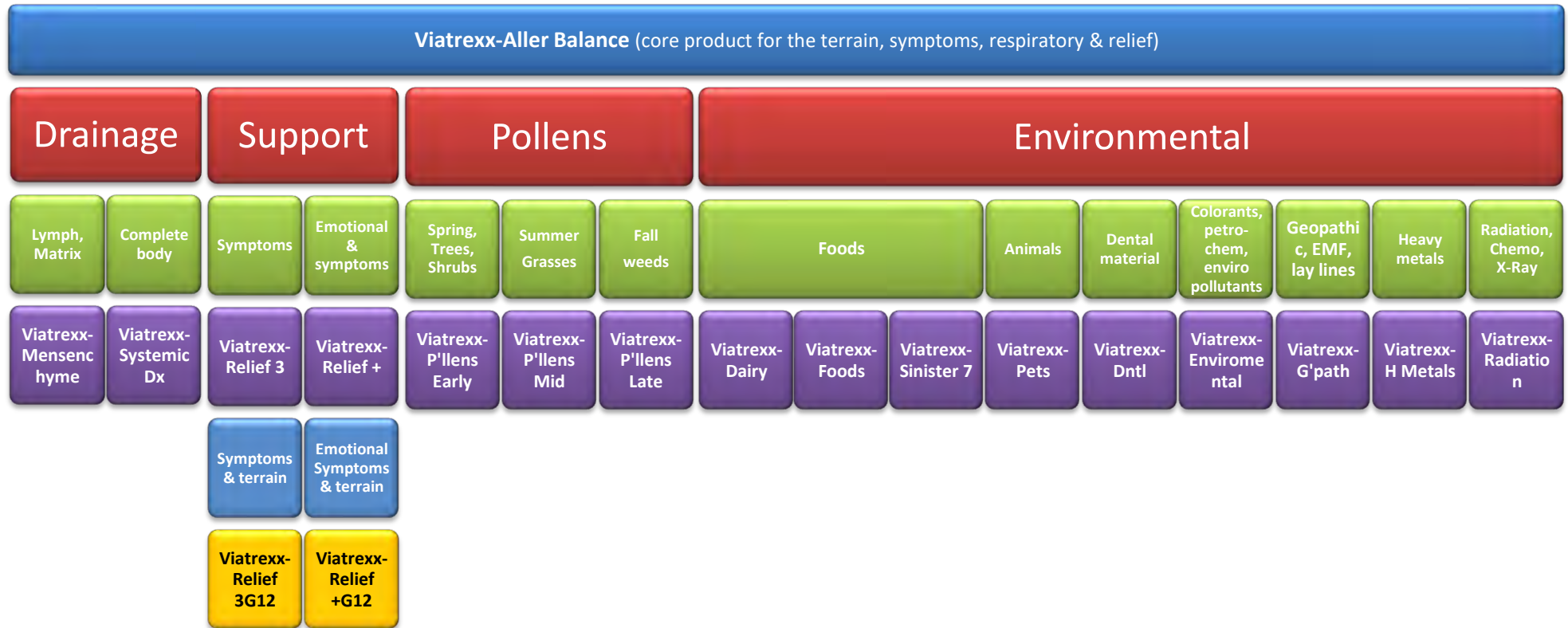
Step 2 (most practitioners start here, for 2 – 3 months)

Add desired sensitivity product to the protocol

Example: Viatrexx-Aller Balance, Viatrexx-Systemic & Viatrexx-Foods

To offer a complete program, please consider diet, dental, habits, work & living environment, the gut, gut health products, enzymes and parasites.

If adrenals or metabolism is weak, add **Viatrexx- Intra Cell**, If the patient is emotional or feels overwhelmed have them use **Viatrexx-Relief +** as needed.



*To use the Viatrexx single phenolics (low dose allergens), or protocols for very sensitive patients, please consult with our office. Thank you

These statements have not been evaluated by any government agency. These products are not intended to diagnosis, mitigate, treat, cure or prevent any disease.

Sep-15

THERAPEUTIC INDEX

<u>Pathology</u>	<u>Products to consider</u>
A	
Abdominal bloating	Relief3 G12 GI Candida + Infla Parasites Choline Chloride ANS/CNS Gallic Acid Enzyme+
Abscess	Infla Systemic Detox Immunexx
Acne Vulgaris	Infla Connectissue Liver Systemic Detox Female +/-Male+
Acne Rosacea	Connectissue Mesenchyme
Acrocyanosis	Mesenchyme Femmale +/-Male+
ADD	MuSkel Systemic Detox, Mesenchyme Neuro 3 H-Metals Environmentals Immunexx BDNF Gallic Acid
Addictions	GABA ANS/CNS

Addison's disease	Thyro Intra-cell Relief + Mesenchyme Systemic Detox Female +/-Male+ ANS/CNS Pregnenolone
Adenoid hypertrophy	Mesenchyme Lymph1 Candida + Immunexx
Adenoidal hypertrophy	Immunexx Lymph1
Adiposity	Adipose Ki-UB Intra-cell Female +/-Male+
Adrenal	Thyro Intra-cell DHEA Neuro 3 ANS/CNS Quercitin Rutin Dairy Mesenchyme Female +/-Male+
Aging premature	BDNF Intra-cell Mesenchyme Female +/-Male+ Choline Chloride DHEA GABA Pregnenolone Growth Hormone TGF Beta

Agoraphobia	Str'ss ANS/CNS GI
Albuminuria	Ki-UB Liver Infla Immunexx
Alcoholism	Acetaldehyde
Allergies	Aller-Balance Mesenchyme Systemic Detox Choline Chloride Histamine Serotonin ANS/CNS Pollens (3) Foods Dairy Environmentals Quercetin Coniferyl Malvin Mannan Coumarin Gallic Acid Candida 1 Candida + F'gus
Alopecia	Hair Male+ Collagen Lymph1

Alzheimer's disease	BDNF Intra-cell Mesenchyme Female +/Male+ Choline Chloride DHEA ANS/CNS Neural-prolo Pregnenolone
Amenorrhea, functional	Female + Mesenchyme Intra-cell
Anal Fissures	Mesenchyme Derma
Andropause	Male+
Anemia	Intra-cell
Anorexia	Relief+ Female +/Male+ Neuro3
Ankylosing Spondylitis	Arthros Mesenchyme Lymph1 Infla
Antibiotics	Candida + Mesenchyme B'terias Immunexx
Anxiety	Str'ss GI Relief + Serotonin
Aphtha	Immunexx GI Virus
Apophysitis	Osteosis Mesenchyme Intra-cell Fem+

Arthritis	Ouch MuSkel Infla Mesenchyme Lymph1
Arthropathy	Arthros Mesenchyme Female +/Male+
Asthma, bronchial	Aller-balance GI Relief + Gallic Acid
Atheroma	Liver Mesenchyme Female +/Male+
Auto-immune disease	Ouch MuSkel Mesenchyme Lymph1 Infla AIL-1
B	
Blepharitis	Infla Liver Immunexx
Breast hypoplasia	Intra-cell Female +
Bronchitis	Lymph1 Immunexx
Bruising	Rutin Ouch
Burns	Lymph1 Infla
Bursitis	Ouch MuSkel Lymph1 Infla

C	
Calcium metabolism(dysfonction)	Osteosis Mesenchyme Intra-cell
Carpal tunnel syndrome	MuSkel Mesenchyme Infla Connectissue
Candidiasis, vaginal	Candida1 Candida + Mannan F'gus Acetaldehyde
Cellulite	Cellulite Connectissue Adipose Female +
Cerebral arteriosclerosis	Lymph1 Intra-cell
Cerebral ischemia	Neuro3 BDNF Intra-cell Female +/Male+
Cerebral lesions	BDNF Lymph1 Female +/Male+ Neuro3
Charcot's disease	Mesenchyme Lymph1
Chemiotherapy	Radiation
Cholangitis	Liver Ki-UB Immunexx Systemic Detox
Cholecystitis	Systemic Detox Intra-cell Immunexx

Cholelithiasis Gallstone	Liver Lymph1 Immunexx
Chondropathy	Arthros Mesenchyme Ouch MuSkel
Chronic Fatigue Syndrome	Intra-cell Female +/-Male+ Str'ss Ameobas GABA
Colics, abdominal	Infla Systemic Detox GI Str'ss
Condylomas (HPV)	Mesenchyme Lymph1 Immunexx Virus
Conjunctivitis	Aller-balance Systemic Detox Lymph 1
Constipation	GI Liver Relief+ G12 Gallic Acid Enzyme+ Str'ss
Crohn's disease	GI Candida + Infla Mesenchyme Relief + Str'ss
Chronic Obstructive Pulmonary Disease	Lymph1 Immunexx Relief +

Cystitis	Ki-UB Candida + GI Immunexx
D	
Depression	Dopamine H-Metals Dental Malvin Environmentals Relief + Neuro 3 GI Female +/Male+ Neuro Pregnenolone GABA ANS/CNS Thyro
De Quervain's disease	MuSkel Mesenchyme Infla Lymph 1
Dermatitis acute	Derma Candida + Systemic Detox Str'ss
Dermatitis atopic	Derma Liver Aller-balance Candida +
Dermatitis chronic	Derma Candida + Systemic Detox Connectissue
Dermatomycosis (ringworm of the nails)	Derma F'gus Lymph 1 Immunexx

Desquamation	GI Candida + Systemic Detox Connectissue
Diabetic neuropathy	Ki-Diab MuSkel Insulin
Diarrhea	GI Candida +
Diverticulosis	GI Infla
Dysbiosis, intestinal	GI Candida + F'gus B'terias
Dyslipidemia	Liver Female +/-Male+ Systemic Detox
Dyspepsia	Enzyme+ Liver Str'ss
Dysuria	GI Ki-UB Str'ss
E	
Eczema	Derma Liver Relief + Str'ss Systemic Detox
Ejaculation premature	Str'ss Intra-cell Male +
Elbow pain	MuSkel Mesenchyme Lymph 1 ouch Ouch

Endometriosis	Female + Systemic Detox Immunexx Str'ss Environementals
Excitability	Str'ss Serotonin GI Female +/Male+ Am'bas Melatonin
Exostosis	Mesenchyme Lymph 1 Infla
F	
Fatty liver	Systemic Detox Liver Mesenchyme Female +/Male+ Insulin
Fibroid	Lymph 1 Immunexx Mesenchyme Female +
Fibromyalgia	MuSkel Mesenchyme Lymph 1 Infla Ouch Arthros Connectissue
Fever	Infla Immunexx Liver
Flu	Immunexx Str'ss Neuro 3 Lymph 1 Mesenchyme

Folliculitis	Derma Liver Immunexx
Frigidity	Relief + Intra-cell Female +/Male+
G	
Gangrene diabetic	Connectissue Mesenchyme Lymph1 Intra-cell Female +/Male+
Gastritis acute and chronic	GI Mesenchyme Str'ss
Gastritis atrophic	GI Mesenchyme Str'ss
Gastroenteritis	GI Ki-UB Immunexx Parasites F'gus Bcterias
Gastroesophageal reflux disease	Lymph 1 Relief + Enzyme+ Systemic Detox
Gaz	GI Parasites Candida +
Gingivitis	Infla Lymph1
Globus Hystericus	Str'ss GI Relief + Serotonin
Glossitis	Lymph 1 Immunexx

Gonorrhea	Immunexx Lymph 1 B'terias
Growing pains	Osteosis Ithurts
H	
Hay fever	Liver Immunexx Lymph 1
Headache	Infla Lymph 1 Female +/-Male + GABA
Head Injury	MuSkel Neuro 3
Heel spur	Mesenchyme Infla Connectissue Prolo Derma Arthros
Helminthiasis	Immunexx GI Parasites
Hematomas	Ouch Lymph 1 Infla
Hemorrhoids	Connectissue Lymph 1 Str'ss Liver GI Infla/Ouch - locally
Hepatic cirrhosis	Liver Mesenchyme Systemic Detox Intra-Cell Female +/-Male +

Hepatitis	Liver Ki-UB Intra-cell Immunexx
Hepatitis chronic	Ki-UB Intra-cell Immunexx
Herniated intervertebral disc	Ouch Mesenchyme Lymph 1 Arthros
Herpes simplex	Lymph 1 Immunexx Virus
Herpes zoster (shingles)	Lymph 1 Intra-cell Immunexx Virus
Hives	Aller-balance Lymph 1 Relief +
Hyperacidity	GI Mesenchyme Str'ss
Hyperactivity	Str'ss GI Relief 3 Female +/Male +
Hypercholesterolemia	Liver Systemic Detox Mesenchyme Pregnenolone
Hypertension (HBP)	KI-Ht KI-UB Female +/Male + ANS/CNS
Hypoglycemia	Intra-cell Female +/Male + Adipose

Hypomenorrhea	Female + Intra-cell
Hypotonia	Intra-cell ANS/CNS
I	
Impetigo	Derma Liver Immunexx
Injuries	Ouch MuSkel Mesenchyme Lymph 1 Infla
Infection, bacterial	B'terias Lymph 1 Immunexx
Infertility	Female +/-Male + Mesenchyme Intra-cell Str'ss
Insomnia	ZzzZz Neuro 3 Melatonin GI Female +/-Male + Str'ss Amoebas Parasites
Interstitial Cystitis	Infla KI-Infla Immunexx It-Hurts Ki-UB Ouch
Intestinal colics	GI Str'ss
Intermenstrual pain	Female + Lymph1 Infla

Intolerance, glucose	Relief + Systemic Detox Liver Candida +
Intolerance, fats	Liver Female +/Male +
Irritable Bowel Syndrome	GI Enzyme+ Female +/Male + Str'ss G-12 Infla Mesenchyme
L	
Laryngitis	Lymph 1 Immunexx Virus
Leucorrhea	Candida + Lymph 1 F'gus Female +
Libido (low)	DHEA Female +/Male +
Liver fibrosis	Liver Mesenchyme Female +/Male +
Loss of voice	Immunexx Aller balance Relief +
Lumbago	Ouch Mesenchyme Arthros
Lymphatism	Systemic Detox Lymph 1 GI Immunexx
Lymphoedema	Lymph 1 Ki-UB Infla

M	
Mastitis	Lymph 1 Infla
Mastodynia	Lymph 1 Female +
Memory	Neuro 3 Choline Chloride BDNF Dopamine Pregnenolone ANS/CNS
Meniere's disease	Neuro 3 Environmentals Intra-cell Female +/-Male +
Menopause	Mesenchyme Intra-cell Fem+/-Male+
Metabolic syndrome	Adipose Systemic Detox Female +/-Male + Mannan
Muscular rheumatism	MuSkel Ouch Mesenchyme Lymph 1 Infla
N	
Nephrolithiasis	Ki-UB Liver Infla
Neurocirculatory asthenia	Intra-cell Female +/-Male +
Nevralgia	MuSkel Infla Mesenchyme Lymph 1 Str'ss

Nevrosis	Relief + GI ANS/CNS Female +/Male +
O	
Obesity	Adipose Ki-UB Intra-cell Female +/Male + Cellulite Insulin
Oedema	Infla Ki-UB Lymph 1
Onychomycosis	F'gus Lymph 1 Immunexx
Orchitis	Infla Immunexx Lymph 1 Male +
Ostealgia	Ouch Mesenchyme Infla
Osteoarthritis	MuSkel Arthros Lymph 1 Mesenchyme Infla Osteosis
Osteoporosis	Osteosis Mesenchyme Intra-cell Female + DHEA
Otitis media acute	Infla Lymph 1 Immunexx

Ovaritis	Infla Lymph 1 Female +
P	
Pain	MuSkel Systemic Detox Arthros Infla Ouch Ithurts Lymph 1
Parkinson's disease	Dopamine Gaba Neural-prolo
Pharyngitis	Infla Immunexx
Phobias	Str'ss Ki-UB Relief + ANS/CNS
PMS	Fem + Lymph 1 Relief +
Polyarthritis	Arthros Ouch Mesenchyme Lymph 1 Infla
Prostatitis	Immunexx Infla Lymph 1 Male +
Psoriasis	Derma Intra-cell Liver Relief +
R	
Restless leg syndrome	Str'ss Relief + Serotonin

Rhinitis, allergic	Aller-Balance
Rhinitis, acute	Lymph 1 Immunexx
S	
Scar	Connectissue Collagen
Sciatica	Ouch Mesenchyme Lymph 1 Infla Prolo Neural-prolo
Scoliosis	MuSkel Arthros Mesenchyme Lymph 1
Seborrhea	Derma L'vr Female +/-male +
Serous otitis media	Lymph 1 Infla
Sinusitis, acute	Infla Lymph 1 Relief 3-G12
Sinusitis, chronic	Mesenchyme Immunexx
Sleep disturbances	ZzzZz Infla Neuro 3
Slough	Connectissue
Smoking cessation	Coumarin Dairy Environmentals
Sprain	Ouch Connectissue Infla Ithurts

Strain	Ouch Connectissue Infla Ithurts
Stress	Str'ss GI ANS/CNS Female +/-Male + DHEA
T	
TADH	MuSkel Systemic Detox Neuro 3 H-Metals Environementals Immunexx Gallic Acid Malvin
Tendinitis	Infla MuSkel Connectissue Prolo
Thrombophlebitis	Lymph 1 Immunexx Connectissue Infla
Thyroid (hyper or hypo)	Thyro
Tonsillitis	Immunexx Lymph 1
Tinnitus	Neuro 3 Mesenchyme Lymph 1 Intra-cell
Tooth extraction	Infla Lymph 1
Torticollis	MuSkel Ouch Mesenchyme Lymph 1 Infla

Trigeminal neuralgia	Ouch Mesenchyme Lymph 1 Infla
U	
Ulcerative Colitis	Candida + GI Infla Intra-cell Str'ss
V	
Vaginitis	Immunexx Lymph 1 Candida + Fem +
Varicose veins	Connectissue Lymph 1
Vertigo	Neuro 3 Intra-cell
Vitiligo	Pigmentation Arthros
W	
Warts	Virus Mesenchyme Immunexx
Wrinkles	Wrinkle Connectissue Collagen Intra-cell Female + Collagen